



# DVR154S

CAMERA SECURITY DVR-SYSTEM



<b>WWW.ELRO.EU</b>	
Roos Electronics bv, Postbus 117, 5126 ZJ Gilze, Holland WWW.ELRO-NL.COM - WWW.ELRO-BE.COM	
Roos Electronics GmbH Arnsberg-Germany WWW.ROOSELECTRONICS.DE	
EDEN, Vallauris, France WWW.EDEN.FR	
C H Byron Corporation, Bromsgrove, U.K. WWW.CHBYRON.COM	

## GB USER'S MANUAL

### LIMITATION OF LIABILITY

- THIS PUBLICATION IS PROVIDED "AS IS" WITHOUT WARRANTY OF ANY KIND, EITHER EXPRESS OR IMPLIED, INCLUDING BUT NOT LIMITED TO, THE IMPLIED WARRANTIES OF MERCHANTABILITY, FITNESS FOR ANY PARTICULAR PURPOSE, OR NON-INFRINGEMENT OF THE THIRD PARTY'S RIGHT.
- THIS PUBLICATION COULD INCLUDE TECHNICAL INACCURACIES OR TYPOGRAPHICAL ERRORS. CHANGES ARE ADDED TO THE INFORMATION HEREIN, AT ANY TIME, FOR THE IMPROVEMENTS OF THIS PUBLICATION AND/OR THE CORRESPONDING PRODUCT(S).

### DISCLAIMER OF WARRANTY

IN NO EVENT SHALL THE SUPPLIER BE LIABLE TO ANY PARTY OR ANY PERSON, EXCEPT FOR REPLACEMENT OR REASONABLE MAINTENANCE OF THE PRODUCT, FOR THE CASES, INCLUDING BUT NOT LIMITED TO THE FOLLOWINGS:

- ANY DAMAGE OR LOSS, INCLUDING BUT WITHOUT LIMITATION, DIRECT OR INDIRECT, SPECIAL, CONSEQUENTIAL OR EXEMPLARY, ARISING OUT OF OR RELATING TO THE PRODUCT;
- PERSONAL INJURY OR ANY DAMAGE CAUSED BY INAPPROPRIATE USE OR NEGLIGENT OPERATION OF THE USER;
- UNAUTHORIZED DISASSEMBLE, REPAIR OR MODIFICATION OF THE PRODUCT BY THE USER;
- ANY PROBLEM, CONSEQUENTIAL INCONVENIENCE, OR LOSS OR DAMAGE, ARISING OUT OF THE SYSTEM COMBINED WITH THE DEVICES OF THE THIRD PARTY ;
- ANY CLAIM OR ACTION FOR DAMAGES, BROUGHT BY ANY PERSON OR ORGANIZATION BEING A PHOTOGENIC SUBJECT, DUE TO VIOLATION OF PRIVACY WITH THE RESULT OF THAT SURVEILLANCE-CAMERA'S PICTURE, INCLUDING SAVED DATA, FOR SOME REASON, BECOMES PUBLIC OR IS USED FOR THE PURPOSE OTHER THAN SURVEILLANCE.

### PRECAUTIONS

- Please refer all work related to the installation of this product to qualified service personnel or system installers.
- Do not operate the appliance beyond its specified temperature, humidity or power source ratings. Use the appliance at temperature within 0°C ~ +50°C (32°F ~ 122°F) and humidity below 85%. The input power source for this appliance is DC/12V 5A. Performance and lifetime of hard disk drives are easily affected by heat (used at high temperature). It is recommended to use this appliance at temperature within +20°C ~ +30°C (68°F ~ 86°F)
- Handle the hard disk drives with care. It is possible to damage them if they are moved while their motors are still running. Do not move them just after turning the power on or off (for around 30 seconds). Protect the hard disk drives from static electricity. Do not stack them or keep them upright. Do not use an electric screwdriver to fix them.
- Clean only with dry cloth.
- Do not block any ventilation openings.
- Do not use the appliance near any heat sources such as radiators, heat registers, stoves or other apparatus that produce heat.
- Protect the power cord from being stepped on or pinched particularly at plugs, convenient receptacles and the points where they exit from the apparatus.
- Do not drop metallic parts through slots. This could permanently damage the appliance. Turn the power off immediately and contact qualified service personnel for service.
- Handle the appliance with care. Do not strike or shake, as this may damage the appliance.
- Do not expose the appliance to water or moisture, nor try to operate it in wet areas. Do take immediate action if the appliance becomes wet. Turn the power off and refer servicing to qualified service personnel. Moisture may damage the appliance and also cause electric shock.
- Do not use strong or abrasive detergents when cleaning the appliance body. When the dirt is hard to remove, use a mild detergent and wipe gently.
- Do not overload outlets and extension cords as this may result in a risk of fire or electric shock.
- Please make a note of your settings and save them. This will help when you are required to change the system configuration, or when unexpected failure or trouble occurs.
- Distributing, copying, disassembling, reverse compiling, reverse engineering, and also exporting in violation of export laws of the software provided with this product, is expressly prohibited.

## Table of Contents

<b>1. Product Overview</b> .....	4
1.1 Features.....	4
<b>2. Panels And Remote Controller</b> .....	5
2.1 Top Panel.....	5
2.2 Front Panel.....	6
2.3 Back Panel.....	7
2.4 Lateral Panel.....	7
2.5 Remote <b>Control</b> .....	8
<b>3. Installations</b> .....	8
3.1 Basic Connections.....	8
3.2 Optional Connections.....	8
<b>4. Main Screen And Basic Operations</b> .....	9
4.1 Text Input.....	9
4.2 Login And Logout.....	10
4.3 Basic Operations.....	10
4.4 Digital Zoom.....	11
<b>5. Menu Display</b> .....	11
5.1 Status Display.....	12
5.2 Video Adjustment.....	12
5.3 VGA Display.....	13
5.4 Backup Device.....	14
5.5 Software Upgrade (Administrator) .....	15
5.6 System Shutdown (Administrator) .....	15
<b>6. Setup (Administrator)</b> .....	15
6.1 Pre-Camera Setup.....	16
6.2 Camera Setup.....	16
6.2.1 Video Loss Setup.....	17
6.2.2 Motion Setup.....	18
6.3 Alarm Setup.....	20
6.4 SEQ Display Setup.....	21
6.5 Scheduled Record Setup.....	22
6.6 HDD Setup.....	22
6.6.1 HDD Format/Clear.....	23
6.7 Password Setup.....	24
6.8 System Setup.....	25
6.9 RS-232/422/485 Setup.....	25
6.10 Network Setup.....	26
6.10.1 E-mail Setup.....	27
6.10.2 Advanced Network Setup.....	28
<b>7. PTZ Control</b> .....	29
<b>8. Search/Playback/Archive (Administrator/Supervisor)</b> .....	30
8.1 Search By Time.....	30
8.2 Search By Event / Log Display.....	31
8.3 Search Archived Files.....	32
8.4 Playback/Archive For Search By Time.....	32
8.5 Playback/Archive For Search By Event.....	33
8.6 Playback For Archived Files.....	33
<b>9. Remote Access</b> .....	34
<b>10. PDA/Mobile Phone Remote Access</b> .....	37
Appendix A--MS-Windows HEM player.....	37
Appendix B--The mouse operation interface reference.....	39
Appendix C--Specifications.....	41
Appendix D--Time Zone Table.....	42
Appendix E--Recording Table.....	43

## 1. Product Overview

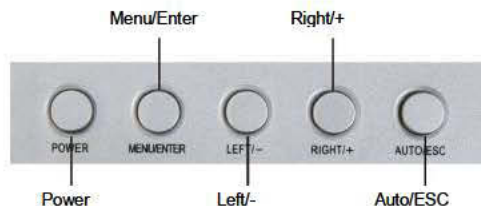
The H.264 digital video/audio recorders are designed for a surveillance system, and are a combination of a hard disk recorder, a video multiplexer, and a web server. To achieve the highest inter-connectivity and inter-operability, this series of digital video/audio recorders are all based on industry-leading front-end to back-end surveillance infrastructure. With state-of-the-art system architecture, powerful compression/decompression engine, and intelligent recording algorithms, sixfold operation can be easily achieved without sacrificing the increasing demands of functionality, performance, reliability, and availability in the surveillance industry.

### 1.1 Features

- Up to 4 color and/or B/W cameras can be connected
- **H.264 Baseline Profile** video compression/decompression with configurable quality
- ADPCM audio compression/decompression
- Real sixfold operation - simultaneous record, live, playback, backup, control, & remote access
- Record capabilities –
  - Full-D1: up to 30 (NTSC) / 25 (PAL) IPS (Images Per Second)
  - Half-D1: up to 60 (NTSC) / 50 (PAL) IPS
  - CIF: up to 120 (NTSC) / 100 (PAL) IPS
- Playback capabilities –
  - Full-D1: up to 30 (NTSC) / 25 (PAL) IPS
  - Half-D1: up to 60 (NTSC) / 50 (PAL) IPS
  - CIF: up to 120 (NTSC) / 100 (PAL) IPS
- Realtime live display, 30 (NTSC) / 25 (PAL) IPS, for each channel
- Event recording, time-lapse recording or both
- Playback search by time or event (alarm, motion, & video loss)
- Versatile display formats: full-screen and 4 split windows
- Digital zoom, X2 & X4
- Intelligent motion detection with programmable area and sensitivity
- Powerful alarm processor with configurable triggering conditions and reactions
- One 3.5 " hard disk drive
- Video/audio backup to USB2.0 storage devices,
- Ethernet interface for remote access through web browser, remote alarm notification, remote setup, and remote software upgrade
- PTZ control capabilities
- Multi-lingual support
- Multi-level password to ensure high degree of security

## 2. Panels and Remote Controller

### 2.1 Top panel



#### Function of the top panel

1. **POWER** —— Turn on / off the LCD monitor.
2. **MENU/ENTER** —— Press the key to configure the LCD monitor
3. **RIGHT/+** —— Move the prompt of the parameters on the screen or increase value.
4. **LEFT/-** —— Move the prompt of the parameters on the screen or reduce value.
5. **AUTO/ESC** —— Press the key to exit the configuration of the LCD monitor.

#### Menu Interface

If you need to adjust the parameters of the LCD monitor, you can press “Menu/ENTER”. The menu will be displayed on the LCD screen. Then press “LEFT/-” or “RIGHT/+” to move the cursor leftwards or rightwards to select the option that user wants to modify.

Then, press “LEFT/-” or “RIGHT/+” to increase value or reduce value. After finished the setting, press the “AUTO/ESC” to exit.



BRIGHTNESS : 0 ~100  
CONTRAST : 0~ 100  
SATURATION : 0~100

COLOR TEMP :  
5000K/6500K/7500K



VOLUME:

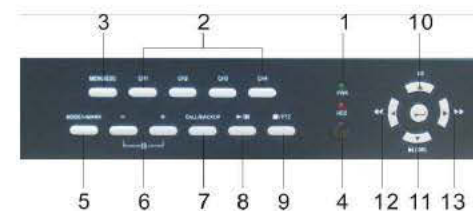


OSD LANGUAGE:  
ENGLISH/CHINESE  
OSD TIME: display time  
FACTORY RESET : YES/NO



EXIT

### 2.2 Front Panel



1. **LEDs**  
Indicators for POWER, HDD access indication.
2. **Alpha-numeric Buttons (1-4)**  
Press these buttons for camera selection in most of the circumstances.
3. **MENU / ESC Button**  
Press this button to display the main menu or escape to the upper level display.
4. **Remote IR PORT**
5. **MODE Button**  
Press this button to toggle between live mode and playback mode in main screen display. In some dialogs, this button is used as a miscellaneous function key.
6. **Split Windows (+/-)Buttons**  
In split-window display, press these buttons for next/previous split-window display. In the others, press these buttons to change the contents.
7. **Copy( ) / CALL Button**  
Press this button to copy the playback images to the storage device connected to USB port. Press this button again to stop copying. In some dialogs, this button is used as a miscellaneous function key.
8. **Play/Pause Button (▶/||)**  
Press this button to play the recorded images, or pause the playback.
9. **Stop (■) / PTZ Button**  
Press this button to stop the playback. While not playing in main screen display, press this button to enter/exit PTZ control if the focus camera is a PTZ camera.
10. **Up/BS Button (▲/BS)**  
Press this button to move the cursor or focus window in most circumstances. In PTZ control, press this button to tilt up the camera. In text editing mode, this button is used as “backspace” key.
11. **Down/DEL Button (▼/DEL)**  
Press this button to move the cursor or focus window in most circumstances. In PTZ control, press this button to tilt down the camera. In text editing mode, this button is used as “del” key. In playback mode, press this button for single step.
12. **Left Buttons (◀◀)**  
In PTZ control, press these buttons to pan the camera. In playback mode, press these buttons for fast backward. In the other screens, press these buttons to move the cursor or focus window.
13. **Right Buttons (▶▶)**  
In PTZ control, press these buttons to pan the camera. In playback mode, press these buttons for fast forward. In the other screens, press these buttons to move the cursor or focus window.

## 2.3 Back Panel



- 1. Video Input Connectors (1-4)**  
Connect system cameras to these BNC connectors.
- 2. Video Output Connectors**  
Connect TV monitors to the BNC connector for other monitor display.
- 3. Audio Input/output Connectors**  
These RCA connectors accept line-in audio signals supplied from external devices such as microphone amplifiers. These connectors supply line-out audio signals to external devices such as speakers. Recorded audio will be supplied from AUDIO OUT during playback.
- 4. RS-485 Connector/ Alarm Output Connectors/ Alarm Input Connectors**  
Connect this connector to RS-485 compatible PTZ camera(s). Please refer to the manuals come with the RS-485 compatible devices for the correct settings.  
**(ALARM OUT 1-2)**  
Connect these connectors to 1 Normally Closed (NC) alarm outputs (1) and 1 Normally Open (NO) alarm outputs (2).  
**(ALARM IN 1-4)**  
Connect these connectors to external devices such as sensors or door switches.
- 5. Ethernet Connector**  
Connect this unit to a 10/100Base-T Ethernet network through this port.
- 6. Mouse plug port**  
For mouse connection.
- 7. Power Cord Inlet (POWER IN)**  
For DC-IN model, connect DC 12V-5A power source to DVR.
- 8. Power Switch (POWER)**  
Turn the power of this unit on/off.
- 9. The Position of Installing HDD**

## 2.4 Lateral Panel



## 2.5 Remote Control

The remote control is an optional accessory to ease the user's operations. You can do all the operations by the remote control instead of the buttons on the front panel. The effective distance is about 10 meters without any obstacle.



### The Buttons

Each of these buttons corresponds to one of those buttons on the front panel. Please refer to the description in [Section 3.1](#).

## 3. Installations

The installations described below should be made by qualified service personnel or system installers.

### 3.1 Basic Connections

Please refer to the following diagram for the connections.

Please make sure to set the NTSC/PAL Selector Switch on the back panel according to the local TV system, ensuring the system work correctly.

- Cameras**  
Connect the camera video input connectors to the video outputs from system cameras or other composite video sources via coaxial cables.
- Main monitor**  
Connect the main monitor output or connect other TV monitor
- Hard disk drive**  
Make sure to install one hard disk (Max. storage size 500GB) inside the DVR. Please set the HDD as master. The steps are as follows:
  - Power off the machine, and then use a screwdriver to uncover it.
  - Use a screwdriver to fix the HDD (3.5 ") as shown.
  - Connect the cables (3.5 " HDD) as shown.
  - Cover the machine.

Note: The HDD must be formatted before it can be used to record video/audio. Please refer to [Section 6.6.1](#) to format the HDD.
- Power**  
For AC-IN model (Half-size DVR), plug 115 or 230 VAC power source into the power socket. For DC-IN model, connect DC 12V power source to V+/V-.



### 3.2 Optional Connections

- Audio inputs**  
Connect the audio input connectors to the audio line-outs from system cameras or other audio sources. Please make sure to associate the audio inputs with the cameras in Camera Setup as described in [Section 6.2](#) accordingly.
- Audio outputs**  
Connect the audio output connectors to the audio line-ins from speakers.
- Alarm inputs**  
Connect the alarm inputs to NC and/or NO type of alarm signals. Please make sure to setup the alarm configurations as described in [Section 6.3](#) accordingly.
- Alarm outputs**  
Connect the alarm output #1 to NC type of alarm signal, alarm output #2 to NO type of alarm signals.
- Ethernet**  
Connect the Ethernet connector to a standard twisted-pair Ethernet cable for remote access via LAN or internet. Please make

sure to setup the related configurations as described in [Section 6.10 Network Setup](#).

- **USB 2.0 disk drives, card reader, etc.**  
If the user wants to use USB2.0 peripheral device to retrieve important recorded images and/or audio, please connect it to the USB port connector.
- **I/R remote control**  
The user may use I/R remote control to control the digital video/audio recorder.
- **PTZ Cameras**  
Connect the RS-485 connector to PTZ camera(s) via the appropriate cable. The system supports a variety of different PTZ cameras, including Pelco D protocol Dome, SamSung SCC-641P, etc. But different PTZ cameras can coexist in a system only if they support the same protocol. Please make sure to set the PTZ ID of the camera(s), and setup the camera (RS-422/485 [Section 6.9](#)) accordingly.

## 4. Main Screen And Basic Operations



The split-window screen, as shown above, is the main screen after system startup. There are two types of split-window screens, including 1-Window and 4-Window. The system will remember the last one before normal shutdown (as described in [Section 5.6](#)) of the system. In addition to the split windows, the system time is displayed on the lower-left corner, the system states on the lower-right corner, and the rolling screen messages, if shown while certain event occurs, on the lower corner.

The system states, from right to left, are described as the followings:

- (1) Normal recording percentage,
- (2) Alarm recording percentage,
- (3) Mute state – speaker icon shown for **unmute**, not shown for mute,
- (4) X2 state – X1, X2, or X4,
- (5) Manual record ON/OFF – REC icon shown for ON,
- (6) Backup state – Backup icon shown for backup,
- (7) SEQ display ON/OFF or playback state – SEQ icon shown for SEQ display ON, other icons for different playback states.

### 4.1 Text Input (Please match with a remote control usage)

There are certain circumstances that the system requires the user to enter text, such as system login, camera title setup, and so on. Please follow the steps below to enter text:

- (1) Press **ENTER** to edit the highlighted option. The flashing cursor will be shown to indicate the editing point. Besides, a **keypad hint** will be shown as below.



- (2) Press **◀▶** to move the cursor to the left/right.
- (3) Press **code** in text editing mode to change text case. (If this entry can accept number only, pressing **code** will have no effects.) Indicators on the screen show the current setting:  
**123** = Number only  
**abc** = No capital letters  
**ABC** = All capital letters  
**CODE** = Internal code for the selected language, such as Chinese, Japanese, etc.
- (4) Press a number key (**1-9, 0**) repeatedly until the character you want appears. (**1** for 1 or space, **2** for 2, a/A, b/B, or c/C, **▶/||** for 5, j/J, k/K, l/L, **MUTE** for 6, m/M, n/N, o/O, the others as shown on the **keypad hint**) If internal **CODE** is selected, a **CODE line** will be added (after the first code is entered) for each new code to be entered. Please check the internal code table for the selected language. For 2-byte code, e.g. Chinese or Japanese, the code accepted is from 0000 - FFFF.

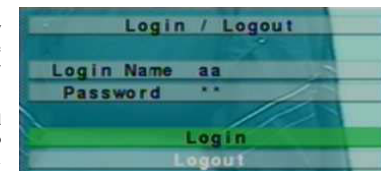
- (5) Press **mark** to bring up a list of punctuation marks and special characters. The highlighted character in the list shows the selected one. Press **▲▼◀▶** to change the selection.
- (6) If you make a mistake, press **BS** to remove the character to the left of the cursor, or press **DEL** to delete the character at the current cursor position.
- (7) In text editing mode, internal code box, and mark list, press **ENTER** to exit and save changes, press **ESC** to exit without making changes.

### 4.2 Login And Logout

There are three password levels in the system, including **Administrator** (highest), **Supervisor**, and **Operator** (lowest). If the user does not login the system, he/she will be treated as "Guest" and can only view live video display.

The system allows up to 18 user accounts. The administrator can set up the login name and password for each user. (Please refer to [Section 6.7](#) for Password Setup.) The Operator can operate live video display, the Supervisor live video display, image playback and archive, and the Administrator everything.

To login/logout the system, press **MENU** in split-window display call up Menu display, and then press **ENTER** when the highlighted option is **Login/Logout** to enter Login/Logout display shown.



In Login/Logout display, follow the Text Input method described [Section 4.1](#) to enter the **Login name** and **Password**, press **▲▼** to highlight and select **Login** option, and then press **ENTER** to login system. If the user wants to logout the system, just press **▲▼** to highlight and select **Logout** option, and then press **ENTER**. Press **ESC** to exit without making changes.

There is one factory-preset login name/password aa/11 at **Administrator** level. The user can use it to login the system for the first time.

**Should the user have forgotten all the administrator-level passwords, please contact the local dealer or installer to recover from it.**

### 4.3 Basic Operations

The basic user's operations after he/she has logged into the system are described below:

- **Numeric**  
Press these buttons to switch to the full-window display for the camera.
- **Alarm Reset**  
Press this button to cancel alarm activation, i.e. reset the alarm outputs and silence the buzzer.
- **MODE (Administrator/Supervisor)**  
In split-window display, press this button to change circularly the live/playback mode for the focus window and the other windows that form a rectangle on the screen.
- **SEQ**  
Press this button to switch to or return from SEQ display mode. In SEQ display mode, each page in the sequence will be shown for the preset page dwelling time sequentially, and SEQ icon will be shown on the lower-right corner of the screen.
- **SEARCH (Administrator/Supervisor)**  
In split-window display, press this button to display the search menus. The system will remember the last one the user chose.
- **REC**  
Press this button to force manual recording. To stop manual recording, press it again. **All cameras will be recorded as if the scheduled record is ON**, and REC icon will be shown on the lower-right corner of the screen if manual recording is ON.
- **MENU / ESC**  
In split-window display, press this button to display the **versatile** menu.
- **Stop (■) / PTZ**  
In split-window display, press this button to enter PTZ control mode if the focus camera is a PTZ camera.
- **X2**  
In full screen display, press this button to enter Digital Zoom mode. Please refer to [Section 4.4 Digital Zoom](#) for the detailed operations in Digital Zoom mode.
- **▲▼◀▶**  
Press these buttons to move focus. The title of the camera for the focus window is highlighted as shown on the screen.





There are 5 items which can be adjusted, including Resolution (1280x1024, 1024x768, 800x600, 640x480), Brightness, Contrast, Hue, and Saturation. The operations are as follows:

- ▲▼  
Press these buttons to select the items.
- +/-  
Press these buttons to adjust the selected item.
- **MODE**  
Press this button to restore **Brightness, Contrast, Hue, and Saturation** to factory default values.
- **ESC**  
Press this button to escape from this screen, and return to Menu display. If the contents have been modified, a Save dialog will be shown to ask the user to save the changes, press **ENTER** to exit and save, **ESC** to exit without saving.

## 5.4 Backup Device

In Menu display, press ▲▼ to change the highlighted option to **Backup Device**, and then press **ENTER** to call up **Backup Device** display as shown below.



The system does not support **SD card**, but supports a variety of USB 2.0 storage devices, including Storage Disk Drives. The operations are as follows:

- ▲▼◀▶  
Press these buttons to select the items.
- **ESC**  
Press this button to escape from this screen, and return to previous display.
- **Connect/Disconnect** – If the backup device is disconnected (as shown in Current Status), please plug the device in one of the backup ports (USB) and/or insert a DVD for DVD device, and then press **ENTER** to command the system to connect with it. If the device is already connected (C R/W - Read/write, as shown in Current Status), please press **ENTER** to command the system software to disconnect with the device, and then unplug the device from the backup port.

**Note 1: DO NOT format the DVD disc for better performance and compatibility.**

**Note 2: Before using USB pen drive, please format it to FAT32 file system by MS-Windows;**

**Note 3: The backup device has to be connected by the system software before it can be used to read/write.**

**Note 4: Some backup devices may have compatibility problems. Please contact your local dealer or installer for the supported devices.**

**Note 5: Please DO NOT unplug the backup device when it's connected, or the system may become abnormal or even hang up.**

- **Backup**  
Press **ENTER** when this item is selected to backup the configurations of this unit to the corresponding device.
- **Restore**  
Press **ENTER** when this item is selected to restore the configuration files in the corresponding backup device to this unit.=

### Some USB 2.0 Devices Tested

USB-Storage Enclosures 5.25" –

Macpower's Alumni Prefect USB 2.0 - PF-U2MS

USB-Disk Storage –

Transcend's JetFlash 150/V60 Series

Apacer's Handy Steno AH220

Pretec's i-Disk Wave 512M-Black

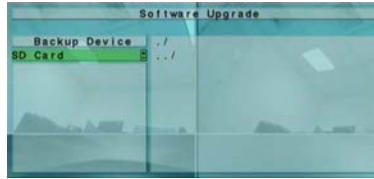
Kingston's DataTraveler USB Flash Driver(DT1/512FE)

SanDisk's Cruzer micro USB Flash Driver

Sony's MICRO VAULT Classic Series

## 5.5 Software Upgrade (Administrator)

In Menu display, press ▲▼ to change the highlighted option to **Software Upgrade**, and then press **ENTER** to call up Software Upgrade display as shown.



The operations are as follows:

- ▲▼◀▶  
Press these buttons to select the items.
- **ESC**  
Press this button to escape from this screen, and return to Menu display.

The following is a brief description for each item and its specific operations:

- **Backup Device** – press **ENTER** to call up Backup Device dialog (if there's no backup device connected).
- **Disk Storage** – to select the disk storage to upgrade. Press **+/-** buttons to select the available storage.
- **Upgrade File** – press **ENTER** to start the upgrade process when the highlighted file is a correct upgrade file. A confirmation dialog will be shown on the screen, press **ENTER** to confirm to upgrade the system software.

**Note :** After the software is upgraded, the system will restart immediately. The split window display will be shown after restart, please wait a moment.

## 5.6 System Shutdown (Administrator)

In Menu display, press ▲▼ to change the highlighted option to **Shutdown**, and then press **ENTER** to shutdown the system. A confirmation dialog will be shown on the screen, press **ENTER** to confirm the shutdown. The system will save all the files and all the states, and then display a power-off message in the rolling screen message area. The user may power off the system safely when the power-off message is shown.



## 6. Setup (Administrator)

In Menu display, press ▲▼ to change the highlighted option to **Setup**, and then press **ENTER** to call up Setup Menu display as shown. (To enter Setup Menu display of the system, please login as Administrator first.)

The user's operations are described as follows:

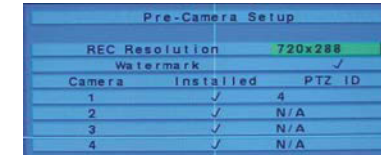
- ▲▼  
Press these buttons to change the highlighted item.
- **ENTER**  
Press this button to enter the setup of the highlighted option. For the details of each option, please refer to the following sections.
- **ESC**  
Press this button to escape from Setup Menu display, and return to Menu display.



If the user wants to reset all the settings to factory default values, he/she may press ▲▼ to change the highlighted option to **Factory Defaults**, and then press **ENTER**. A confirmation dialog will be shown, press **ENTER** again to make the changes, **ESC** to quit it.

## 6.1 Pre-Camera Setup

In Setup Menu display, press ▲▼ to change the highlighted option to **Pre-Camera**, and then press **ENTER** to call up Pre-Camera Setup display as shown.



There are up to 4 cameras which can be connected to the system. The Pre-Camera Setup allows the administrator to define some fundamental attributes for all the installed cameras.

The general operations are as follows:

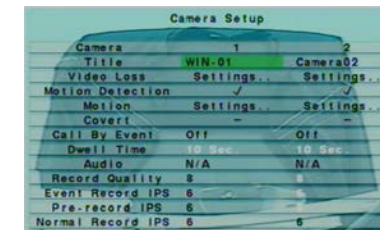
- ▲▼◀▶  
Press these buttons to select the items.
- **Numeric**  
Press these buttons to select the camera.
- **ESC**  
Press this button to escape from this screen, and return to Setup Menu display. If the contents have been modified, a Save dialog will be shown to ask the user to save the changes, press **ENTER** to exit and save, **ESC** to exit without saving.

The following is a brief description for each item and its specific operations:

- **REC Resolution** – the record resolution for all the cameras in the system. For NTSC, it can be 720x480, 720x240, or 360x240; for PAL, 720x576, 720x288, or 360x288. Press **+/-** buttons to select the resolution.
- **Installed** – whether this camera is installed or not. If installed, the following items will be **adjustable**. Press **ENTER** or **+/-** to check/uncheck this item. The default setting is " " - checked.
- **Watermark** Press **ENTER** buttons to change the value
- **PTZ ID** – the PTZ ID of this camera if it's a PTZ camera. The PTZ ID has to be consistent with the setting of this camera. Please refer to the manual of the camera for the ID setting. Press **+/-** buttons to change the value (N/A or 0-255). The default setting is "N/A" – Not Available, which means that it's not a PTZ camera.

## 6.2 Camera Setup

In Setup Menu display, press ▲▼ to change the highlighted option to **Camera**, and then press **ENTER** to call up Camera Setup display as shown.



The Camera Setup allows the administrator to define the attributes for each camera. There are up to 4 cameras which can be connected to the system.



The general operations are as follows:

- ▲▼◀▶  
Press these buttons to select the items. The display will scroll left/right if the selected item is not shown on the screen.
- **Numeric**  
Press these buttons to select the camera.
- **COPY** (📄)  
Press this button to copy all the settings - excluding detailed Motion settings, Video Loss settings, Title/Audio - of the focus camera to all the following cameras. (📺 focus camera is 1, its settings will be copied to those of cameras 2-4.)
- **ESC**  
Press this button to escape from this screen, and return to Setup Menu display. If the Save dialog is shown, press **ENTER** to exit and save, **ESC** to exit without saving.

The following is a brief description for each item and its specific operations:

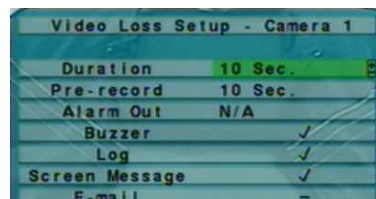
- **Title** – The title (Max. 8 characters) of this camera. Please follow the Text Input method described in [Section 4.1](#) to modify this item.
- **Video Loss Settings..** – used to setup the action settings when video loss is detected for this camera. Press **ENTER** in **Settings..** to call up Video Loss Setup display for the camera. Please refer to [Section 6.2.1](#) for the details.
- **Motion Detection** – whether the motion detection of this camera is enabled or not. Press **ENTER** or **+/-** to check/uncheck this item. The default setting is “✔” - checked.
- **Motion Settings..** – used to setup the motion settings for this camera. Press **ENTER** in **Settings..** to call up Motion Setup display for the camera. Please refer to [Section 6.2.2](#) for the details.
- **Covert** – covert or not. If the camera is covert, the video of this camera can only be seen if the user has logged in as Administrator. Press **ENTER** or **+/-** to check/uncheck this item. The default setting is “-” - unchecked.
- **Call By Event** – whether to switch the call monitor to the video of this camera if certain event occurs for this camera. There are 4 options, including Off, Motion, Alarm, Both (Motion & Alarm). Press **+/-** buttons to select one.
- **Dwell Time** – the dwell time if **Call By Event** is set to Motion, Alarm, or Both. Press **+/-** buttons to adjust the value (3-60 seconds, discrete).
- **Audio** – the AUDIO IN corresponding to this camera. **If selected, the audio data for the selected AUDIO IN will be recorded with the video data for this camera.** Press **+/-** buttons to select none (N/A) or the AUDIO Inputs (1/2). The default setting is “N/A”.
- **Record Quality** – the record quality for this camera. Press **+/-** buttons to select the value (1-9, with 1 the lowest (rough) quality, 9 the highest (fine) quality).
- **Event Record IPS** – the IPS (Images Per Second) for this camera if certain event (Motion, Alarm) occurs for this camera. This camera will be recorded at this rate for Post-record time since the event occurs. (Please refer to the following sections for Post-record time.) Press **+/-** buttons to select the value (0 – 25 (PAL) / 30 (NTSC), discrete).
- **Pre-record IPS** – the pre-record IPS for this camera if certain event (Video Loss, Motion, Alarm) occurs for this camera. This camera is recorded at this rate for Pre-record time before the event occurs. (Please refer to the following sections for Pre-record time.) Press **+/-** buttons to select the value (0 – **Event Record IPS** for this camera, discrete). Please note that the total **Event Record IPS** / **Pre-record IPS** should not exceed the system recording capacity (NTSC: 120/CIF, 60/Half-D1, 30/Full-D1; PAL: 100/CIF, 50/Half-D1, 25/Full-D1), or the system will lower the actual rate automatically at recording.
- **Normal Record IPS** – the normal record IPS for this camera. This camera will be recorded at this rate if no event occurs. Press **+/-** buttons to select the value (0 – **Pre-record IPS** for this camera, discrete).

## 6.2.1 Video Loss Setup

In Camera Setup, press **ENTER** to call up Video Loss Setup of the selected camera as shown when the highlighted option is **Video Loss Settings** of the camera to setup. The Video Loss Setup allows the administrator to define how the system responds to the detected video loss for the camera.

The general operations are as follows:

- ▲▼  
Press these buttons to select the items.
- **Numeric**  
Press these buttons to select the camera.



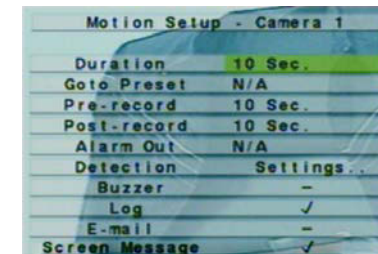
- **COPY** (📄)  
Press this button to copy the Video Loss settings of the focus camera to all the following cameras. (📺 focus camera is 1, its Video Loss settings will be copied to those of cameras 2-4.)
- **ESC**  
Press this button to escape from this screen, and return to Camera Setup display. If the Save dialog is shown, press **ENTER** to exit and save, **ESC** to exit without saving.

The following is a brief description for each item and its specific operations:

- **Duration** – response duration to define at most how long (in seconds) the Alarm Out relay and the Buzzer will keep being triggered after video loss is detected for this camera. However, the Alarm Out relay and the Buzzer will be reset immediately once the camera returns to normal. Press **+/-** buttons to adjust the value (3-60 seconds, discrete).
- **Pre-record** – to define how long before video loss is detected this camera shall be intensively recorded at Pre-record IPS. Press **+/-** buttons to adjust the value (0-10 seconds, discrete). Please note that the actual pre-record time may be shorter than the value set if the total size of the pre-record pictures exceeds the pre-record buffer size of the system.
- **Alarm Out** – to define which Alarm Output will be triggered when video loss of this camera is detected. Press **+/-** buttons to select none (N/A) or one of the Alarm Outputs (1-2).
- **Buzzer** – to activate the internal Buzzer or not when video loss of this camera is detected. Press **ENTER** or **+/-** to check/uncheck this item. The default setting is “✔” - checked.
- **Log** – to log to event logs or not. Press **ENTER** or **+/-** to check/uncheck this item. The default setting is “✔” - checked.
- **Screen Message** – to display the event message on the screen or not. Press **ENTER** or **+/-** to check/uncheck this item. The default setting is “✔” - checked.
- **E-mail** – to send the event e-mail to remote station or not. The e-mail will be sent to the predefined receivers at the moment when the event is triggered. Press **ENTER** or **+/-** to check/uncheck this item. The default setting is “-” - unchecked.

## 6.2.2 Motion Setup

In Camera Setup, press **ENTER** to call up Motion Setup as shown when the highlighted option is **Motion Settings..** of the camera to setup. The Motion setup allows the administrator to define how the system responds to the detected motion for the camera.



The general operations are as follows:

- ▲▼  
Press these buttons to select the items.
- **Numeric**  
Press these buttons to select the camera.
- **COPY** (📄)  
Press this button to copy the Motion settings, including Detection settings, of the focus camera to all the following cameras. (📺 focus camera is 1, its Motion settings will be copied to those of cameras 2-4.)
- **ESC**

Press this button to escape from this screen, and return to Camera Setup display. If the Save dialog is shown, press **ENTER** to exit and save, **ESC** to exit without saving.

The following is a brief description for each item and its specific operations:

- **Duration** – response duration to define at most how long (in seconds) the Alarm Out relay and the Buzzer will keep being triggered after motion is detected for this camera. However, the Alarm Out relay and the Buzzer will be reset immediately once the camera returns to normal. Press **+/-** buttons to adjust the value (3-60 seconds, discrete).
- **Goto Preset** – to define the preset position to go to if motion is detected and this camera is a PTZ camera. For more details about preset locations, please refer to [Chapter 7 PTZ Control](#).
- **Pre-record** – to define how long before motion is detected this camera shall be intensively recorded at Pre-record IPS. Press **+/-** buttons to adjust the value (0-10 seconds, discrete). Please note that the actual pre-record time may be shorter than the value set if the total size of the pre-record pictures exceeds the pre-record buffer size of the system.
- **Post-record** – to define how long after motion is detected this camera shall be intensively recorded at Event Record IPS. Press **+/-** buttons to adjust the value (0 second - 60 minutes, discrete).
- **Alarm Out** – to define which Alarm Output will be triggered when motion of this camera is detected. Press **+/-** buttons to select none (N/A) or one of the Alarm Outputs (1-2).
- **Buzzer** – to activate the internal Buzzer or not when motion of this camera is detected. Press **ENTER** or **+/-** to check/uncheck this item. The default setting is “ ” - checked.
- **Log** – to log to event logs or not. Press **ENTER** or **+/-** to check/uncheck this item. The default setting is “ ” - checked.
- **Screen Message** – to display the event message on the screen or not. Press **ENTER** or **+/-** to check/uncheck this item. The default setting is “ ” - checked.
- **E-mail** – to send the event e-mail to remote station or not. The e-mail will be sent to the predefined receivers when the event is triggered. Press **ENTER** or **+/-** to check/uncheck this item. The default setting is “-” - unchecked.
- **Detection Settings..** – used to setup the motion detection settings, including detection area and sensitivity, when motion is detected for this camera. Press **ENTER** in **Settings..** to call up Motion Detection Setup (as shown) for this camera. In Motion Detection Setup, the video area is divided into many small grids, and the area with transparent grids is the area which will be detected for motion, while gray grids not detected for motion. Besides, there is a (green) Mask window.



The following is a brief description for the operations:

- **Numeric**  
Press these buttons to select the camera.
- **▲▼◀▶**  
Press these buttons to move the Mask window.
- **+/-**  
Press these buttons to resize the Mask window.
- **ENTER**  
Press this button to set/reset the area under the Mask window.
- **MODE**  
Press this button to set/reset the whole video area.
- **SEQ**

Press this button to decrease the sensitivity, from 10 – 1, for the motion detection of this camera.

- **CALL**  
Press this button to increase the sensitivity, from 1 – 10, for the motion detection of this camera.
- **SEARCH**  
Press this button to test the motion detection of this camera. The detected motion will be shown on the screen. Press this button again to stop testing.
- **ESC**  
Press this button to escape from Motion Detection Setup, and return to Motion Setup.

## 6.3 Alarm Setup

In Setup Menu display, press **▲▼** to change the highlighted option to **Alarm**, and then press **ENTER** to call up Alarm Setup display as shown. The Alarm Setup allows the administrator to define the attributes for each alarm input, and the actions if it's triggered. There are up to 4 alarm inputs which can be connected to the system.

Alarm Setup				
Alarm In	1	2	3	4
Normal State	Open	Open	Open	Open
Focus Camera	1	2	3	4
Duration	10 Sec	10 Sec	10 Sec	10 Sec
Goto Preset	N/A	N/A	N/A	N/A
Pre-record	10 Sec	10 Sec	10 Sec	10 Sec
Post-record	10 Sec	10 Sec	10 Sec	10 Sec
Alarm Out	N/A	N/A	N/A	N/A
Buzzer	✓	✓	✓	✓
Log	✓	✓	✓	✓
Screen Message	✓	✓	✓	✓
E-mail	-	-	-	-

The general operations are as follows:

- **▲▼◀▶**  
Press these buttons to select the items.
- **Numeric**  
Press these buttons to select the alarm input.
- **COPY (📄)**  
Press this button to copy the settings of the focus alarm input to all the following alarm inputs. (Eg. focus alarm input is 1, its settings will be copied to those of alarm inputs 2-4.)
- **ESC**  
Press this button to escape from this screen, and return to Setup Menu display. If the Save dialog is shown, press **ENTER** to exit and save, **ESC** to exit without saving.

The following is a brief description for each item and its specific operations:

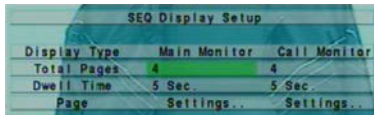
- **Normal State** – press **+/-** buttons to select **N/A**, **Close** or **Open**. Please check the signal type, normally close or normally open, connected to the alarm input terminal on the rear panel of the system. If there's no signal connected, please select **N/A** – Not Available, and the following items will not be settable. The default setting is **Open**.
- **Focus Camera** – the camera corresponding to this alarm input.
- **Duration** – response duration to define at most how long (in seconds) the Alarm Out relay and the Buzzer will keep being triggered after this alarm input is triggered. However, the Alarm Out relay and the Buzzer will be reset immediately once this alarm input returns to normal. Press **+/-** buttons to adjust the value (3-60 seconds, discrete).
- **Goto Preset** – to define the preset position to go to for the Focus Camera if this alarm input is triggered and the Focus Camera is a PTZ camera. For more details about preset locations, please refer to [Chapter 7 PTZ Control](#).
- **Pre-record** – to define how long before this alarm input is triggered the Focus Camera shall be intensively recorded at Pre-record IPS. Press **+/-** buttons to adjust the value (0-10 seconds, discrete). Please note that the actual pre-record time may be shorter than the value set if the total size of the pre-record pictures exceeds the pre-record buffer size of the system.
- **Post-record** – to define how long after this alarm input is triggered the Focus Camera shall be intensively recorded at Event Record IPS. Press **+/-** buttons to adjust the value (0 second - 60 minutes, discrete).
- **Alarm Out** – to define which Alarm Output will be triggered when this alarm input is triggered. Press **+/-** buttons to select none (N/A) or one of the Alarm Outputs (1-2).
- **Buzzer** – to activate the internal Buzzer or not when this alarm input is triggered. Press **ENTER** or **+/-** to check/uncheck this

item. The default setting is “ ” - checked.

- **Log** – to log to event logs or not. Press **ENTER** or **+/-** to check/uncheck this item. The default setting is “ ” - checked.
- **Screen Message** – to display the event message on the screen or not. Press **ENTER** or **+/-** to check/uncheck this item. The default setting is “ ” - checked.
- **E-mail** – to send the event e-mail to remote station or not. The e-mail will be sent to the predefined receivers when the event is triggered. Press **ENTER** or **+/-** to check/uncheck this item. The default setting is “ ” - unchecked.

## 6.4 SEQ Display Setup

In Setup Menu display, press **▲▼** to change the highlighted option to **SEQ Display**, and then press **ENTER** to call up SEQ Display Setup as shown.



The SEQ Display Setup allows the administrator to define the display pages in SEQ Display for main monitor and call monitor. There are 1 display type - 1-Window for main monitor, and 1 display type for call monitor. The general operations are as follows:

- **▲▼◀▶**  
Press these buttons to select the items.
- **ESC**  
Press this button to escape from this screen, and return to Setup Menu display. If the Save dialog is shown, press **ENTER** to exit and save, **ESC** to exit without saving.

The following is a brief description for each item and its specific operations:

- **Total Pages** – total pages for this SEQ Display Type. The maximum number varies with the display type. Press **+/-** buttons to select the desired number from the available list.
- **Dwell Time** – the dwell time (3 ~ 60 seconds, discrete) for each page of this display type. Press **+/-** buttons to change the value.
- **Page Settings..** – used to set the camera in each viewing window for each page of this SEQ Display Type. Press **ENTER** to call up Display Page Setup as shown.



In Display Page Setup, the split window display for the current page is shown. And the title of the camera for the focus window is highlighted. The following is a brief description for the operations:

- **Numeric**  
Press these buttons to change the camera for the current page.
- **+/-**  
Press these buttons to change the current page for this SEQ Display Type.
- **ESC**  
Press this button to escape from Display Page Setup, and return to SEQ Display Setup.

## 6.5 Scheduled Record Setup

In Setup Menu display, press **▲▼** to change the highlighted option to **Scheduled Record**, and then press **ENTER** to call up Scheduled Record Setup as shown.

Weekday	Start	Alarm	Motion	Normal
SUN	00:00	A/V	A/V	A/V
MON	00:00	A/V	A/V	A/V
TUE	00:00	A/V	A/V	A/V
WED	00:00	A/V	A/V	A/V
THU	00:00	A/V	A/V	A/V
FRI	00:00	A/V	A/V	A/V
SAT	00:00	A/V	A/V	A/V

The Scheduled Record Setup allows the administrator to define when and how to record for the system. There are up to 16 time segments (T1 – T16) for each weekday.

The general operations are as follows:

- **▲▼◀▶**  
Press these buttons to select the items. The display will scroll left/right if the selected item is not shown on the screen.
- **COPY** (📄)  
Press this button to copy the settings of the focus weekday. (Focus weekday is TUE, its settings will be copied to those of weekdays WED-SAT.)
- **ESC**  
Press this button to escape from this screen, and return to Setup Menu display. If the Save dialog is shown, press **ENTER** to exit and save, **ESC** to exit without saving.

The following is a brief description for each item and its specific operations:

- **Start** – the start time of this time segment, increment at 30 minutes. (The end time of this time segment is implicitly set as the start time of next time segment, or the start time of the first time segment of the same weekday if it's the last one.) Press **+/-** buttons to select the desired start time.  
  
Example: If the user sets the start time of T1/MON as 9:00, T2/MON as 18:00, T3-T16/MON as N/A (Not Available), then T1/MON is 9:00-18:00, T2/MON is 0:00-9:00, and 18:00-24:00.
- **Alarm** – record mode (No, Video, or Audio/Video) when certain alarm input is triggered. Press **+/-** buttons to change the value.
- **Motion** – record mode (No, Video, or Audio/Video) when motion is detected for certain camera. Press **+/-** buttons to change the value.
- **Normal** – normal record mode, including No, V (Video only), or A/V (Audio/Video). Press **+/-** buttons to change the value.

## 6.6 HDD Setup

In Setup Menu display, press **▲▼** to change the highlighted option to **HDD**, and then press **ENTER** to call up HDD Setup as shown.

Record Type	Alarm Record	Normal Record
Size (GB)	46	106
Auto Overwrite	✓	✓
HDD Full Action	✓	✓
Duration	10 Sec	10 Sec
Alarm Out	N/A	N/A
Buzzer	✓	✓
Log	✓	✓
E-mail	-	-

In the surveillance applications, alarm video/audio is much more important than normal video/audio. So, this digital video/audio recorder is designed to allow the user to divide each HDD into alarm partition and normal partition. And, alarm video/audio will be recorded in alarm partition, normal video/audio in normal partition.

The HDD Setup allows the administrator to format/clear each HDD, set Alarm Record size and Normal Record size of each HDD, and define the behaviors for Alarm Record and Normal Record if it reaches the end of the last HDD in the system.

The general operations are as follows:

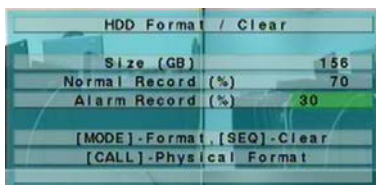
- ▲▼◀▶  
Press these buttons to select the items.
- **MODE => Format/Clear**  
Press this button to format/clear the HDDs as described in [Section 6.6.1](#).
- **ESC**  
Press this button to escape from this screen, and return to Setup Menu display. If the Save dialog is shown, press **ENTER** to exit and save, **ESC** to exit without saving.

The following is a brief description for each item and its specific operations:

- **Size (GB)** – the total HDD storage in GB (Giga-Byte) for Alarm Record and Normal Record respectively. This item is just for information. Please refer to [Section 6.6.1](#) for more detailed information and setup of each individual HDD.
- **Auto Overwrite** – automatic overwrite of the recorded video/audio from HDD#1 when the Alarm/Normal Record disk drive capacity reaches the end of the last HDD. If Auto Overwrite is disabled and the Alarm/Normal Record disk drive capacity reaches the end, the system will not overwrite the recorded video/audio, and hence not record Alarm/Normal video/audio, until the user presses the **Alarm Reset** button. Press **ENTER** or **+/-** to check/uncheck this item. The default setting is “\*” - checked.
- **HDD Full Action** – actions when Alarm/Normal Record disk drive capacity reaches the end of the last HDD. Press **ENTER** or **+/-** to check/uncheck this item. The default setting is “\*” - checked.
- **Duration** – response duration to define at most how long (in seconds) the Alarm Out relay and the Buzzer will keep being triggered after the corresponding partition, Alarm Record or Normal Record, is full. Press **+/-** buttons to adjust the value (3-60 seconds, discrete).
- **Alarm Out** – to define which Alarm Output will be triggered when the corresponding partition, Alarm Record or Normal Record, is full. Press **+/-** buttons to select none (N/A) or one of the Alarm Outputs (1-2).
- **Buzzer** – to activate the internal Buzzer or not when the corresponding partition, Alarm Record or Normal Record, is full. Press **ENTER** or **+/-** to check/uncheck this item. The default setting is “\*” - checked.
- **Log** – to log to event logs or not. Press **ENTER** or **+/-** to check/uncheck this item. The default setting is “\*” - checked.
- **E-mail** – to send the event e-mail to remote station or not. The e-mail will be sent to the predefined receivers when the event is triggered. Press **ENTER** or **+/-** to check/uncheck this item. The default setting is “-” - unchecked.

## 6.6.1 HDD Format/Clear

In HDD Setup display, press **MODE** to call up HDD Format/Clear screen as shown.



The HDD must be formatted before it can be used to record video/audio. The HDD Format/Clear screen allows the administrator to format and/or clear each HDD, and set the size for Alarm Record partition and Normal Record partition for each HDD. Please use only HDD with maximum storage size as 500GB, and make sure there's no remote user before formatting the HDD.

The general operations are as follows:

- **MODE => Format**  
Press this button to format the HDD. A confirmation dialog will be shown on the screen, press **ENTER** to confirm, or **ESC** to

cancel. Please note that it would take about 40 seconds to format a brand new HDD.

Note: If the HDD has not been formatted yet, it will be formatted and partitioned with default record size, 30% for Alarm record and 70% for Normal record. If it has been formatted before, it will be formatted according to the Alarm REC Size (%) and Normal REC Size (%) displayed on the screen, but the previously recorded contents within the new size won't be cleared and will be accessible.

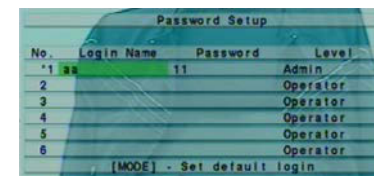
- **SEQ => Clear**  
Press this button to clear the HDD. A confirmation dialog will be shown on the screen, press **ENTER** to confirm, or **ESC** to cancel.  
  
Note: If the HDD has not been formatted yet, it will be formatted and partitioned with default record size, 30% for Alarm record and 70% for Normal record. If it has been formatted (and recorded) before, it will be partitioned according to the Alarm Record Size (%) and Normal Record Size (%) displayed on the screen, and the previously recorded contents will all be cleared.
- **CALL => Physical Format**  
Press this button to physically format the selected HDD. A confirmation dialog will be shown on the screen, press **ENTER** to confirm, or **ESC** to cancel. **Please note that the recording will be always optimized for performance & lifetime no matter it's for the first time or for the one hundredth time. The formatting would take less than 1 minute. We strongly recommend that the user use this physical format function to format the HDD for the first time.**  
  
Note: The HDD will be physically formatted and partitioned with default record size, 30% for Alarm record and 70% for Normal record. All the previously recorded contents will be cleared.
- **ESC**  
Press this button to escape from this screen, and return to HDD Setup display. If the Save dialog is shown, press **ENTER** to exit and save, **ESC** to exit without saving.

The following is a brief description for each item and its specific operations:

- **Size (GB)** – the total storage in GB (Giga-Byte) for the HDD if it has been formatted. This item is just for information.
- **Alarm Record(%)** – Alarm Record Size (in percentage) for this HDD. Please follow the Text Input method described in [Section 4.1](#) to change the value.
- **Normal Record(%)** – Normal Record Size (in percentage) for this HDD. It equals to (100% - Alarm Record Size). This item is just for information.

## 6.7 Password Setup

In Setup Menu display, press ▲▼ to change the highlighted option to **Password**, and then press **ENTER** to call up Password Setup as shown.



The Password Setup allows the administrator to add new users, delete existing ones, and/or modify the user's name, password, and/or level.

There are three password levels in the system, including **Administrator** (highest), **Supervisor**, and **Operator** (lowest). The Operator can operate live video display, the Supervisor live video display, image playback and archive, and the Administrator everything. The system allows up to 18 user accounts.

There is one factory-preset login name/password aa/11 at **Administrator** level. The user can use it to login the system for the first time.

The general operations are as follows:

- ▲▼◀▶  
Press these buttons to select the items. The display will scroll up/down if the selected item is not shown on the screen.
- **MODE => Set default login**  
Press this button to select this user as the default one at login, or deselect if this user is the default login user. An asterisk (\*)

will be shown preceding the number for the default login user. And this login name/password will be the default one each time the login dialog is shown, so the user doesn't bother to enter the text to login the system.

- **ESC**  
Press this button to escape from this screen, and return to Setup Menu display. If the Save dialog is shown, press **ENTER** to exit and save, **ESC** to exit without saving.

Following is a brief description for each item and its specific operations:

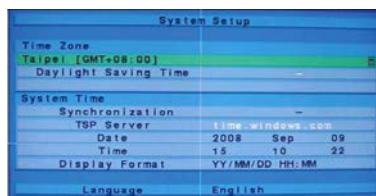
- **Login Name** – please follow the Text Input method described in [Section 4.1](#) to modify this item.
- **Password** – this item accepts numbers only. Please follow the Text Input method described in [Section 4.1](#) to modify this item.
- **Level** – the password level (**Administrator**, **Supervisor**, or **Operator**) for this user. Press **+/-** buttons to change the level.

## 6.8 System Setup

In Setup Menu display, press **▲▼** to change the highlighted option to **System**, and then press **ENTER** to call up System Setup as shown.

The System Setup allows the administrator to set the system time, time zone, time synchronization, language, etc.

The general operations are as below:



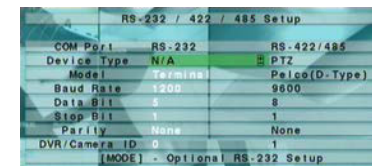
- **▲▼◀▶**  
Press these buttons to select the items.
- **ESC**  
Press this button to escape from this screen, and return to Setup Menu display. If the Save dialog is shown, press **ENTER** to exit and save, **ESC** to exit without saving. **Please note that if the selected language is changed, the user will be asked to reboot the system for the newly selected language to take effect.**

The following is a brief description for each item and its specific operations:

- **Time Zone** – press **+/-** buttons to select the time zone for the system. Please refer to [Appendix B](#) for the time zone table.
- **Daylight Saving Time** – press **ENTER** or **+/-** to check/uncheck this item. The default value is set by selecting a different time zone, but the user may check/uncheck this item if the default setting is checked.
- **System Time** –
- **Synchronization** – time synchronized with TSP Server or not. Press **ENTER** or **+/-** to check/uncheck this item. The default setting is “-” - unchecked.
- **TSP Server** – TSP (Time Synchronization Protocol) server name if Time Synchronization is enabled. The system will try to do time synchronization with the specified TSP server at the system preset interval. Please follow the Text Input method described in [Section 4.1](#) to modify this item.
- **Date** – system date. Press **+/-** buttons to modify each of these items.
- **Time** – system time. Press **+/-** buttons to modify each of these items.
- **Display Format** – format used for the system time displayed on the lower-left corner of the main screen. Press **+/-** buttons to select the desired format.
- **Language** – press **+/-** buttons to select the language for the system. The languages supported include: **English**, **Russian**, **Simplified Chinese**, **Italy** **Portugal**, etc.

## 6.9 RS-232/422/485 Setup

In Setup Menu display, press **▲▼** to change the highlighted option to **RS-232/422/485**, and then press **ENTER** to call up RS-232/422/485 Setup as shown.



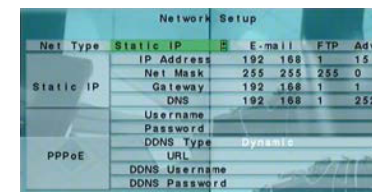
The RS-232/422/485 Setup allows the administrator to setup RS-232 control port, and RS422 or RS-485 control port. Please refer to the manuals for the connected devices - PTZ cameras – to set these items in RS-232/422/485 Setup.

The general operations are as follows:

- **▲▼◀▶**  
Press these buttons to select the items.
  - **MODE**  
Press this button to call up Optional RS-232 Setup screen if it's built in the DVR. The operations for Optional RS-232 Setup are the same as RS-232/422/485 Setup.
  - **ESC**  
Press this button to escape from this screen, and return to Setup Menu display. If the Save dialog is shown, press **ENTER** to exit and save, **ESC** to exit without saving.
- The following is a brief description for each item and its specific operations:
- **Device Type** – **PTZ** or **N/A** (Not Available). Press **+/-** buttons to change the type. **Please note that PTZ can only be selected for either RS-232 or RS-485, but not both.**
  - **Model** – PTZ model of the connected devices. The PTZ models supported include **Pelco D protocol Dome**, **SamSung SCC-641P**, etc. Press **+/-** buttons to change the supported model (or protocol).
  - **Baud Rate** – press **+/-** buttons to change the value.
  - **Data Bit** – press **+/-** buttons to change the value.
  - **Stop Bit** – press **+/-** buttons to change the value.
  - **Parity** – (**Odd**, **Even**, or **None**). Press **+/-** buttons to change the value.
  - **DVR/Camera ID** – for **PTZ** => the device ID for this digital video/audio recorder, and it must not conflict with the other devices connected in the same control port. Press **+/-** buttons to change the ID.

## 6.10 Network Setup

In Setup Menu display, press **▲▼** to change the highlighted option to **Network**, and then press **ENTER** to call up Network Setup as shown.



The Network Setup allows the administrator to setup all Ethernet network related parameters. Please check with your network administrator to set these parameters correctly. For most home users, the typical configuration would connect the DVR to a router to the internet. In those cases, please see your router user manual for details on how to port forward data and controls to/from the router to the DVR. In addition, most home users will have dynamic IP addressing. Please use a dynamic DNS service, such as <http://www.dyndns.com> to access your router and DVR from the internet.

The general operations are as follows:

- ▲▼◀▶  
Press these buttons to select the items.
- ESC  
Press this button to escape from this screen, and return to Setup Menu display. If the Save dialog is shown, press ENTER to exit and save, ESC to exit without saving.

The following is a brief description for each item and its specific operations:

- Net Type – Static IP, PPPoE, or DHCP. DHCP can only be used for intranet (LAN) access, while Static IP and PPPoE can be used for both internet & intranet access. Press +/- buttons to change the Net Type.
- IP Address – Ethernet IP address for the system. To get the static IP address, please contact your local ISP (Internet Service Provider). Please follow the Text Input method described in Section 4.1 to modify these items.
- Net Mask – Net Mask for the IP address. Please follow the Text Input method described in Section 4.1 to modify these items.
- Gateway – Gateway IP address for the system. Please follow the Text Input method described in Section 4.1 to modify these items.
- DNS – DNS (Domain Name Server) IP address for the system. Please follow the Text Input method described in Section 4.1 to modify these items.
- Username – PPPoE username for the system if PPPoE is used. Please follow the Text Input method described in Section 4.1 to modify this item.
- Password – PPPoE password for the system if PPPoE is used. Please follow the Text Input method described in Section 4.1 to modify this item.
- DDNS Type – Dynamic, Static, or Custom DDNS (Dynamic Domain Name Server) type. Please contact your local DDNS Service Provider to get the DDNS URL, username, and password. Press +/- buttons to change this item.
- URL – the URL (Uniform Resource Locators) for the system if PPPoE is used. Please follow the Text Input method described in Section 4.1 to modify this item.
- DDNS Username – DDNS username for the system if PPPoE is used. Please follow the Text Input method described in Section 4.1 to modify this item.
- DDNS Password – DDNS password for the system if PPPoE is used. Please follow the Text Input method described in Section 4.1 to modify this item.
- E-mail – press ENTER to call up E-mail Setup. Please refer to Section 6.10.1 for the details.
- Adv. – press ENTER to call up Advanced Network Setup. Please refer to Section 6.10.2 for the details.

### 6.10.1 E-mail Setup

In Network Setup, press ENTER to call up E-mail Setup as shown when the highlighted option is E-mail.



The E-mail Setup allows the administrator to set e-mail related parameters. When an event occurs and E-mail is enabled for the corresponding action, an e-mail will be sent based on the parameters set here.

The general operations are as follows:

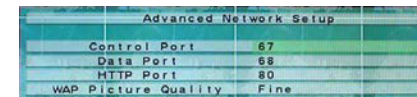
- ▲▼  
Press these buttons to select the items.
- ESC  
Press this button to escape from this screen, and return to Network Setup display. If the Save dialog is shown, press ENTER to exit and save, ESC to exit without saving.

The following is a brief description for each item and its specific operations:

- SMTP Server – SMTP mail server name. Please follow the Text Input method described in Section 4.1 to modify this item.
- Authentication – whether the SMTP mail server requires authentication. Press ENTER or +/- to check/uncheck this item.
- Username – username if the SMTP mail server requires authentication. Please follow the Text Input method described in Section 4.1 to modify this item.
- Password – password if the SMTP mail server requires authentication. Please follow the Text Input method described in Section 4.1 to modify this item.
- Mail From – the e-mail address of this DVR unit, i.e. the sender of the e-mails originated from the triggered events. Please follow the Text Input method described in Section 4.1 to modify this item.
- Mail To #1-5 – the receivers' e-mail addresses. The system can send the e-mails originated from the triggered events to up to 5 different receivers. Please follow the Text Input method described in Section 4.1 to modify these items.
- Attachment – attached picture for the e-mail sent. The value could be (N/A, Original picture, QCIF picture). Press +/- buttons to change this item.

### 6.10.2 Advanced Network Setup

In Network Setup, press ENTER to call up Advanced Network Setup as shown when the highlighted option is Adv.



The Advanced Network Setup allows the administrator to set advanced network parameters. If the user is not familiar with network administration, please DO NOT modify the items in this dialog.

The general operations are as follows:

- ▲▼  
Press these buttons to select the items.
- ESC  
Press this button to escape from this screen, and return to Network Setup display. If the Save dialog is shown, press ENTER to exit and save, ESC to exit without saving.

The following is a brief description for each item and its specific operations:

- Control Port – the control port for remote access. The default value is 67. Please follow the Text Input method described in Section 4.1 to modify this item.
- Data Port – the data port for remote access. The default value is 68. Please follow the Text Input method described in Section 4.1 to modify this item.
- HTTP Port – the HTTP (web page) port for remote access. The default value is 80. Please follow the Text Input method described in Section 4.1 to modify this item.
- WAP Picture quality (if this machine support cellular phone long range interview) Please press +/- The key changes initial value.

Note: If the Control Port or Data Port is not available or accessible during remote access, the system will reset the ports to their default values, i.e. 67/68.

## 7. PTZ Control

The digital video/audio recorder supports a variety of PTZ cameras. The user can easily control the PTZ cameras through the operations described in this Chapter if those PTZ cameras have been connected and setup correctly. Please refer to [Section 3.2 Optional Connections](#) for the connections. Please refer to [Section 6.1 Pre-Camera Setup](#) to set the PTZ ID of each PTZ camera, and [Section 6.9 RS-232/422/485 Setup](#) to setup the control port.

If a camera is also a PTZ camera, there will be an asterisk (\*) preceding its title in its video window in split-window display. Please press **PTZ** button to enter PTZ control mode if the focus camera is a PTZ camera. The asterisk (\*) will be **blinked** to indicate that the camera is now in PTZ control mode.

In PTZ control mode, the user's operations can be divided into general operations and miscellaneous function specific operations, and are described as follows:

### General operations:

- **PTZ**  
Press this button to exit PTZ control mode. The asterisk (\*) will be changed back to normal color.
- **▲▼**  
Press these buttons to tilt the camera up/down.
- **◀▶**  
Press these buttons to pan the camera left/right.
- **ZOOM (🔍) +/-**  
Press these buttons to zoom in/out the camera.
- **GOTO**  
Press this button to move the camera to the preset position. The keypad hint will be shown. Press numeric buttons **0-9** to enter the number of the preset position to move the camera to. The range of the preset positions is 00-99.
- **NEXT**  
Press this button for the next miscellaneous function. The miscellaneous functions include Focus, Iris, Auto PAN, SEQ, Preset, and Pan Speed. And the active one will be shown on the lower right corner of the screen. The miscellaneous function specific operations are described in the following table.

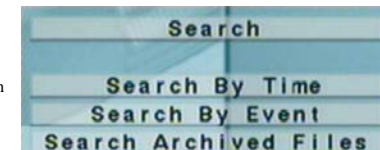
### Miscellaneous function specific operations:

Active function	Operations	Descriptions
Focus	<b>+/-</b> <b>ENTER</b>	focus far/near auto focus
Iris	<b>+/-</b>	Iris increase/decrease
Auto Pan (3)	<b>+/-</b> <b>ENTER</b> <b>*</b> <b>#</b>	Auto pan speed is shown in parenthesis increase/decrease speed start/stop Auto Pan set start position set end position
SEQ (5 sec.)	<b>+/-, NUMBER</b> <b>ENTER</b>	SEQ dwell time is shown in parenthesis. If SEQ mode is on, the camera will go to preset position 0-9 (or 1-10) sequentially. change dwell time start/stop SEQ mode, an asterisk (*) will be shown if SEQ mode is on
Preset (1)	<b>+/-, NUMBER</b> <b>ENTER</b>	Preset location is shown in parenthesis change Preset location set Preset location
Pan Speed (3)	<b>+/-</b>	Manual pan speed is shown in parenthesis increase/decrease speed

## 8. Search/Playback/Archive (Administrator, Supervisor)

There are three ways to search the recorded video/audio for playback:

- (a) Search by time,
- (b) Search by event,
- (c) Search archived files.



In split-window display, press **SEARCH** button to call up Search Menu display as shown.

The user's operations are described as follows:

- **▲▼**  
Press these buttons to change the highlighted item.
- **ENTER**  
Press this button to enter the corresponding Search display of the highlighted item. The Search displays and their operations are described in the following sections, followed by the playback operations of the searched video/audio.
- **ESC**  
Press this button to escape from Search Menu display, and return to split-window display.

### 8.1 Search By Time

The screen for Search By Time is shown on the right side:

The Status field will show the 'Recorded from' time based on the selected Video/Audio before searching - alarm partition if any of Alarm, Motion, or Video Loss, is checked, and normal partition if Normal is checked.



The general operations are as follows:

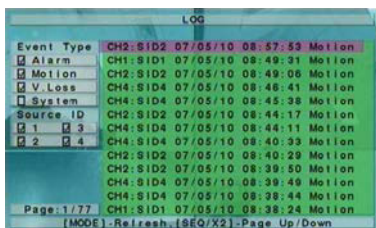
- **▲▼**  
Press these buttons to select the items.
- **ESC**  
Press this button to escape from this screen, and return to split-window display.
- **SEARCH / MODE**  
Press this button to start searching the recorded video/audio with the selected search time and video/audio type **for playback**. The search result will be shown on the bottom of this dialog if it failed. **If there's no camera in playback mode, all the cameras in the current split window will be set to playback mode.**
- **Play Button (▶/||)**  
Press this button to start playing the recorded video/audio with the selected search time and video/audio type. The search result will be shown on the bottom of this dialog if it failed. **If there's no camera in playback mode, all the cameras in the current split window will be set to playback mode.**
- **Copy Button (📄)**  
Press this button to **backup (copy)** the selected type of recorded video/audio starting from the **Search Time** (described below) in the HDD to the connected backup device **without playback**. The Backup display (described in [Section 8.4](#)) will be shown. **Please note that this kind of backup is performed in the background, and the user can still do almost all the operations.**

The following is a brief description for each item and its specific operations:

- **Search Time** – (Year, Month, Date, Hour, Minute) for the recorded video/audio. The playback (or backup) will start from the time entered here when the user press the playback buttons (or Copy button) later. Press **+/-** buttons to modify each item.
- **Video/Audio** – (Alarm, Motion, Video Loss, Normal). Check the types of the recorded video/audio you want to search for playback. Press **ENTER** or **+/-** to check/uncheck each item.

## 8.2 Search By Event / Log Display

The screen for Search By Event - Log display, is shown below:



There are four different types of event logs, including Alarm, Motion, Video Loss, and System. And up to **1000** most recent event logs can be stored in the system.

The general operations are as follows:

- **▲▼◀▶**  
Press these buttons to select the items.
- **ESC**  
Press this button to escape from this screen, and return to split-window display.
- **MODE =>** Refresh  
Press this button to refresh the log display. If there are new event logs after the screen is last updated, the log list shown will be updated accordingly.
- **SEQ =>** Page Up
- **X2 =>** Page Down  
Press **SEQ/X2**-Page Up/Down the Log display.
- **Numeric (ENTER)**  
Press these buttons to select the display page of the event logs, the log list will also be updated. (Please note that there are only 1/2/3/4 available for the keypad on the front panel.)

The following is a brief description for each item and its specific operations:

- **Event Type** – the type of the events (**Record, Alarm, Motion, Video Loss, System**) to be shown in the log list. The Event Type “System” includes all system related events, such as power on/off, and will not trigger recording. Press **ENTER** or **+/-** to check/uncheck the event type for the log list.
- **Source ID** – the source which triggered the event. For Alarm, it’s the alarm input number; for Motion and Video Loss, it’s the camera number. It’s used to filter the events to be shown in the log list. Press **ENTER** or **+/-** to check/uncheck each item.
- **Log List** – the event logs according to the Event Type and Source ID selected. The user may (1) press **ENTER** to enter Event Playback display of the selected event log in this list, (2) press **Play Button (▶/||)** to playback it directly, or (3) press **Copy Button (📄)** to backup (copy) the selected recorded video/audio to the connected backup device **without playback**. The Backup display (described in [Section 8.4](#)) will be shown. **Please note that this kind of backup without playback is performed in the background, and the user can still do almost all the operations.** Please refer to [Section 8.5 Playback For Search By Event](#) for the detailed operations for event playback.

## 8.3 Search Archived Files

The screen for Search Archived Files is shown below:



The operations are as follows:

- **▲▼◀▶**  
Press these buttons to select the items.
- **ESC**  
Press this button to escape from this screen, and return to split-window display.

The following is a brief description for each item and its specific operations:

- **Backup Device** – press **ENTER** to call up Backup Device dialog (if there’s no Backup device connected).
- **Disk Storage** – to select the disk storage to search the archived files. Press **+/-** buttons to select the available storage.
- **Archived File List** – the archived files in the selected Disk Storage. Please select the file, and then press **ENTER** to enter Archived File Playback display of the selected file in this list, or press **Play Button (▶/||)** to playback it directly. Please refer to [Section 8.6 Playback For Archived Files](#) for the detailed operations. Besides, you may press **MODE** to delete the selected file.

**Note :** The format of the filename is **camNN-YYYYMMDD-hhmmss.h264**, where **NN** stands for camera number, **YYYY** year, **MM** month, **DD** date, **hh** hour, **mm** minute, and **ss** second.

## 8.4 Playback/Archive For Search By Time

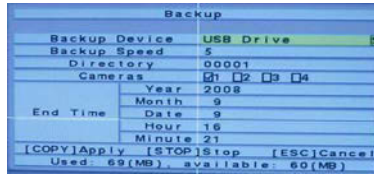
In split-window display, press **MODE** button to change circularly the live/playback mode for the focus window and the other windows that form a rectangle on the screen. The video windows for the windows in playback mode are grayed, while those in live mode display live video.

Please refer to [Section 4.3 Basic Operations](#) for how to change the camera(s) in the playback windows(s). After the playback windows and cameras are all set as you want, you may use the following buttons to control the playback:

- **Play/Pause (▶/||)**  
Press this button to play the recorded video/audio searched at forward speed 1X, or pause the playback. If the playback is paused, press this button again to resume playing. Note that audio can only be played at forward speed 1X.
- **Stop (■)**  
Press this button to stop playing the recorded video/audio. If the user press **▶/||** button later, the playback will start from the beginning.
- **Fast Forward (▶▶/▶ on the remote controller, ▶ on the front panel)**  
Press this button for fast forward playback. Each time this button is pressed, the forward playback speed will become faster, from 2X, 4X, 8X, up to 16X, and then back to 2X.
- **Fast Backward (◀◀/◀ on the remote controller, ◀ on the front panel)**  
Press this button for fast backward playback. Each time this button is pressed, the backward playback speed will become faster, from 2X, 4X, 8X, up to 16X, and then back to 2X.
- **Single Step (▶/▼ on the remote controller, ▼ on the front panel)**  
Press this button to play the recorded images frame by frame.
- **Copy (📄)**  
Press this button to copy or stop copying the playback video/audio to the storage device connected to the USB port. The **Backup display** will be shown as below.

The following is a brief description for the operations in Backup display:





▲▼◀▶  
Press these buttons to select the items.

**Copy Button (COPY)**  
Press this button to start backup (copy) or apply the revised settings if it's copying, and return to the previous display. There will be a **Copy** icon on the lower-right corner indicating that the selected video/audio is being archived to the storage device. **For DVD disc, the files won't be written to the disc until the storage size reaches 1 GB or the user stop copying. Writing to the disc may take more than 1 minute for every 100 MB (depending on the disc type).**

**Stop (■)**  
Press this button to stop copying and return to the previous display. The **Copy** icon **will disappear**.

**ESC**  
Press this button to cancel, and return to the previous display.

The following is a brief description for each item and its specific operations:

- Backup Device** – the backup device connected to the system. Press **ENTER** on the left button to call up **Backup Device dialog** if there's no backup device connected. Press **+/-** buttons on the right selection to select the connected device. **Please follow the steps described in Section 5.4 Backup Device to connect the backup device before copying.**
- Backup Speed** – 1-9, with 1 the lowest speed, 9 the highest speed. Press **+/-** buttons to select the value.
- Directory** – the directory in the backup device to store the archived files. Please follow the Text Input method described in [Section 4.1](#) to input the directory.
- Cameras** – the video/audio of the cameras to be archived. Press **ENTER** or **+/-** to select/deselect each of the selectable cameras.
- End Time** – (Year, Month, Date, Hour, Minute) for the recorded video/audio for the **backup without playback of Search By Time**. The files will be backup from the start time to the end time entered here when the user press the **COPY** button to start copying. Press **+/-** buttons to modify each item.

Except the playback buttons, the user can still do all the other operations in split-window display as if there is no playback. Please refer to [Section 4.3 Basic Operations](#) for the operations of the other buttons.

## 8.5 Playback/Archive For Search By Event

In Log display, press **ENTER** to enter Event Playback display of the selected event log, or press **Play Button (▶/||)** to playback it directly. This display is the same as full screen display of the main display, and the playback buttons are effective.

The operations are as follows:

- Playback Buttons (▶/||, ■, ▶▶, ◀◀, ▶, COPY, ENTER)**  
These buttons are all the same as in [Section 8.4 Playback/Archive For Search By Time](#).
- The Other Buttons**  
All the other buttons are the same as in [Section 4.3 Basic Operations](#).

## 8.6 Playback For Archived Files

In Search Archived Files display, press **ENTER** to enter Archived File Playback display of the selected file, or press **Play Button (▶/||)** to playback it directly. This display is the same as full screen display of the main display, and the playback buttons are effective.

The operations are as follows:

- Playback Buttons (▶/||, ■, ▶▶, ◀◀, ▶, ENTER)**  
These buttons are all the same as in [Section 8.4 Playback/Archive For Search By Time](#). Please note that **COPY** button (COPY) is not effective in this display.

- The Other Buttons**  
All the other buttons are the same as in [Section 4.3 Basic Operations](#).

## 9. Remote Access

The digital video/audio recorder can be accessed by using a web browser installed on a PC if this unit is connected to a network, either internet or intranet.

### Before Logging On

Before accessing this unit through web browser, please make sure the followings (**For most PCs, only step 3 & 6 is needed!**):

- This unit is connected to the network correctly, and the configurations are all setup correctly. Please refer to [Section 6.10 Network Setup](#) for the detailed configurations.
- DirectX® End-User Runtime 9.0** or above has been installed in your PC successfully. If not, please logon to <http://www.microsoft.com> to get the free download of it.
- The domain name or IP address of the digital video/audio recorder has been set as **trusted web site** in your PC, and the (**https:**) **server verification** for trusted web site is **unchecked**. If not, please go to Tools->Options->Security in your I.E. to do the settings. **For I.E. 7, please set the Security level for this zone to Low.**
- The ActiveX control in your PC is not disabled. If you are not sure, please go to Tools->Options->Security->Custom in your I.E. to enable ActiveX control.
- Port 67 (control port) or port 68 (data port) is not blocked out by your router or ISP (Internet Service Provider).
- If the PC has used I.E. to access earlier software version of DVR, please go to Tools->Options->General in your I.E. to **delete "Temporary Internet files" and all offline contents.**
- To have better look-&-feel for your PC, please go to Start->Setup->Control, and select Display->Visual Style->Windows XP Style.
- Please go to Start->Setup->Control, select Display->Settings, and set the Screen Resolution to at least 1024x768 and Color to 32-bit.

### Logon

After the above-mentioned items have been done correctly, restart your web browser and enter the domain name or IP address of the digital video/audio recorder in the Location/Address field of the web browser. The plug-in software in the system will be downloaded and run automatically in the web browser. **Please note that up to 5 users can logon this DVR simultaneously.**

### Remote Display and Operations

After the plug-in software is downloaded and run in the web browser, you will be asked for ActiveX control to interact with your PC. Please select Yes, and the remote login display will be shown. For some PCs, it may be necessary to click in the window with the message in red color, but outside the Login Dialog before the next step. Please enter the correct login name and password (and control port & data port if they have been changed) for the digital video/audio recorder to login the system. And the main remote display will be shown as follows.



The video images can be displayed in several types of split-window screens, including 1/4/9/16-Window. And the focus window is surrounded by a frame border. In addition to the video windows, there are different icons on the lower corner and the right corner of the screen for status display and control. (The "L" following the camera title stands for Live display, "P" for Playback, and the camera title with white background has detected motion.)

**Note 1:** The frame rate is limited by the bandwidth of the network and the pre-record IPS of the camera ([Section 6.2](#)).

**Note 2:** The picture quality depends on the recording resolution and recording quality of the camera ([Section 6.2](#)).

When the user leaves I.E., he/she may be asked to save changes to files, please click on OK or Yes to save the changes. The operations and descriptions for these icons are as follows:

- In video window, right-click the mouse button to call up Camera/Playback/Print Dialog. (Left) click on Playback or Camera number to change the window to the corresponding camera and live/playback mode. **The user may also click on the "Print"**

button to print the video to the printer.



Click on these icons for 1/4/9/16-Window display.



Click on this icon to switch to or return from SEQ display mode.



Click on this icon to toggle between live mode and playback mode for all the video windows.



Click on this icon to freeze/unfreeze the video images for all the video windows.



Click on this icon to enable/mute the audio input from the PC, button down for enable, button up for mute. If enabled, the audio input from the PC will be sent to the DVR. The default setting is 'mute'.



Click on this icon to enable/mute the audio output from the camera for the focus window, button down for enable, button up for mute. The default setting is 'mute'.



**Playback panel** for playback buttons, including Fast Backward, Fast Forward, Single Step, Play, Pause, Stop, and Copy (from left to right). **Please note that the Copy function can be used to archive both live and playback streams.** Please check/uncheck the cameras to be archived when the Copy Dialog is shown, and then click on OK or Apply button. If the user click on Apply button and select & highlight one of the cameras, the current copying status for that camera will be shown in the dialog.



**PTZ control panel.** If the camera in the focus window is a PTZ camera, these buttons in the PTZ control panel can be used for PTZ control. The operations include Tilt Up/Down, Pan Left/Right, Zoom In/Out, Focus Near, Focus Far, Iris - (darker), Iris + (brighter).

**Camera**

Status indicators for cameras 1-16 (GREEN for normal, RED for motion) for the DVR. Click on any of these icons to select the corresponding camera of the DVR to be displayed in the focus window.

**Alarm In**

Status indicators for alarm inputs 1-4 (GREEN for normal, RED for alarm) for the DVR.

**Alarm Out**

Alarm outputs 1-2 (GREEN for normal state, RED for triggered state) for the DVR. For Administrator, click on any of these icons to control the corresponding alarm output from normal to triggered, or from triggered back to normal.



Click on this icon to call up Search-by-time dialog. Please select the time (Year, Month, Date, Hour, and Minute) and recorded video/audio type (Alarm, Motion, Video Loss, and Normal) to search for playback. Click on Search button to start the search of the

recorded video/audio. (If it failed, the result will be shown on the title of the dialog.) Now, you may use the playback buttons to play the recorded video/audio. **Please note that there must be some cameras in playback mode for the search to succeed.**



Click on this icon to call up Search-by-event dialog. The event logs will be shown on the screen. Please select the event type and source ID to search for the event logs. Click on Refresh, Up, or Down to update the event logs. Click on the desired event log to highlight and select it. Click on the OK button to search the recorded video/audio for the highlighted event log. Now, you may use the playback buttons to play the recorded video/audio.



Click on this icon to call up search-PC-video dialog. Please select the file, and then click on Open. Now, you may use the playback buttons to play the recorded video/audio in the file.



Click on this icon to show/hide full PTZ control panel. The user can click on the PTZ Panel (but outside of any object in it) (to call up the **Context menu**) to move it.



Click on this icon to call up Setup dialog. **The following** is a brief description for each item:

- **Device Name** – any meaningful name for the (DVR) device.
- **Address** – IP address or URL domain name for the (DVR) device. It should be the same as the IP address (for Static IP) or URL (for PPPoE) in Network Setup for the (DVR) device.
- **Control Port** – the control port for the (DVR) device. The default value is 67.
- **Data Port** – the data port for the (DVR) device. The default value is 68.
- **User Name** – the login user name for the (DVR) device. It must be in the list in Password Setup for the (DVR) device. Please note that **different levels of users have different available operations.**
- **Password** – the corresponding password for the login user name for the (DVR) device.
- **Auto Connection** – whether the user wants to connect automatically to this (DVR) device.
- **Connected** – whether this PC is connected with the (DVR) device now.

The other properties in the dialog are similar to those described in [Chapter 6](#). Please refer to [Chapter 6](#) for the detailed descriptions. Besides, the user can **download/upload** the configurations from/to the connected DVR, or **open/save** the configurations from/to the designated directory.



Click on this icon to call up remote Software Upgrade dialog. Please select the DVR device and upgrade file in the PC, and then click on Start button to start the software upgrade process. The Upgrade status will be updated according to the progress. When the upgrade file is uploading, the user may click on Stop/Close button to stop the upgrade process.

**Note :** There must be at least one formatted HDD in the DVR for the remote upgrade to succeed. After the software in the DVR is upgraded, the DVR will restart immediately and the PC will be disconnected from the DVR. Please do step 7 in Before Logging On, and then re-run the I.E. to connect to the DVR again.

#### System Requirements of Remote PC

It is recommended to access the digital video/audio recorder using a PC that meets the following system requirements. If you use a PC that does not meet the following system requirements, it may cause problems such as slow imaging or the browser unable to operate.

- **PC**  
IBM PC/AT compatible.
- **CPU**  
Intel® Pentium® 4, 1.4 GHz or above.
- **OS**

MicroSoft® Windows® XP or Windows® 2000 with SP4.

- **Monitor**  
1024 x 768 or above.
- **Memory (DRAM)**  
512MB.
- **Network Interface**  
Ethernet, 10/100 Base-T.
- **Web Browser**  
MicroSoft® Internet Explorer® 6.0 or above.
- **DirectX**  
MicroSoft® DirectX® 9.0 or above.

## 10. PDA/Mobile Phone Remote Access

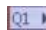
The digital video/audio recorder can also be remotely accessed by using a web browser installed on a PDA or mobile phone that (1) supports **xHTML** and **MJPEG file format**, and (2) has screen resolution at **320x240** or above.

Please enter the domain name or IP address of the digital video/audio recorder in the Location/Address field of the web browser, and the remote login display will be shown. (For most of the mobile devices, the DVR will automatically redirect to the correct web page. Eg. <http://192.168.1.120/wap.htm> for IP address <http://192.168.1.120>. If not, please enter the full address with /wap.htm. The user may need to enter <http://192.168.1.120:8000/wap.htm> if HTTP port has been changed to 8000.) Please enter the correct login name and password for the digital video/audio recorder to login the system, and the screen will be shown as follows.




The following is a brief description for each item and its specific operations:

 Click on this button to submit the content to the digital video/audio recorder. The new settings will take effect, and the screen will refresh.

 Selection of Quad (Q1-Q4) or 1-Window (1-16) display.

Alarm outputs 1-4 (unchecked for normal, checked for triggered). Administrator can check to trigger the alarm output, uncheck for back to normal.

 Status indicators for alarm inputs 1-5 (top row), 6-10, and 11-16 (unchecked for normal, checked for alarm).

## Appendix A--MS-Windows HEM player

There are several MS-Windows utility programs in the bundled CD, **HEM Player**, **Keyboard Control Simulator**, and **M4V/H.264 to AVI Conversion Utility**. The HEM Player is meant to play archived/backed up files on local PC. The AVI Conversion utility converts H.264 files to standard \*.AVI files.

Please insert the CD in the CD-ROM or DVD-ROM drive in your PC, and then double click on **Setup.exe** in the CD to install, and **Utilities/Setup.exe** to install the utility programs. Please follow the instructions on the screen to install the software in the default directory "Program Files\Hyper Electronics Mappers" or the directory entered by the user. For this model, please refer to the manual for HEM. For the other utility programs, please refer to the following paragraphs.

### HEM Player

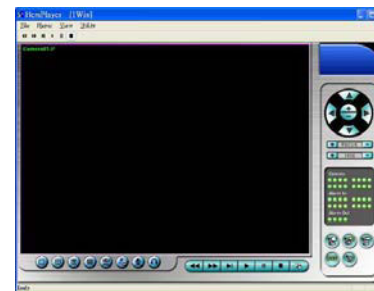
Before running **HEM Player** in your PC, please make sure the followings:

1. **DirectX® End-User Runtime 9.0** or above has been installed in your PC successfully. If not, please logon to

<http://www.microsoft.com> to get the free download of it.

2. Please go to Start->Setup->Control, select Display->Settings, and set the Screen Resolution to at least 1024x768 and Color to 32-bit.

To run the **HEM Player** under MicroSoft® Windows® XP or Windows® 2000, please select Start->Programs->Hyper Electronics Mappers->HemPlayer, and the screen will be shown below.



Since this utility is a free player utility for archived files, from USB backup or remote backup, some of the functions are disabled. The mouse cursor will change to "Hand" type if it's on those enabled function icons. The operations and their descriptions are the same as in [Chapter 9. Remote Access](#).

To select an archived file for playback, please click on **File** menu, and then select **Open**. After an archived file is opened, the user may click on the player buttons to play the file. The following diagram shows the screen after the **Play** button is pressed.



The user may print the whole player screen (including the current video image) or the current video image by selecting **File** menu, and then select **Print** or **Print Video** respectively.

### Keyboard Control Simulator

To run the **Keyboard Control Simulator** under MS-Windows, please select Start->Programs->Hyper Electronics Mappers->KCtrlSimulator, and the screen will be shown below.



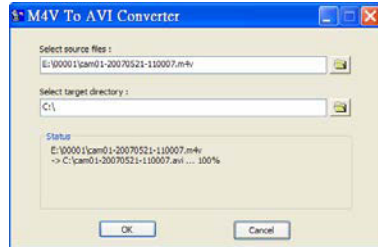
Please note that most of the buttons correspond to the keypads on the front panel. If you connect the PC through RS-232 and use an RS-232/RS-485 converter to connect to multiple DVRs, you would be able to control multiple DVRs via the simulation software. Please refer to [Section 3.2 Optional Connections](#) to connect/cascade the DVRs to the PC.

To select the DVR to control, please click on the button as circled in the above diagram to set the corresponding DVR ID. Please note that the [RS-232/422/485 setup \(Section 6.9\)](#), including the **DVR ID**, in the DVRs must be configured correctly (**Mode** must be set as **Control Protocol**). Please use the buttons **MAIN-AUX ON**, **MAIN-AUX OFF**, **CALL-AUX ON**, **CALL-AUX OFF** to switch on/off the output of the controlled DVR.

Note: **UP-LEFT**, **UP-RIGHT**, **DOWN-LEFT**, and **DOWN-RIGHT** are newly added to control the PTZ cameras diagonally.

#### M4V/H.264 to AVI Conversion Utility

To run the **M4V/H.264 to AVI Conversion Utility** under MS-Windows, please select Start->Programs->Hyper Electronics Mappers->M4V2AVI or double-click on the file **AVI\_Converter.EXE**, and the screen will be shown below.



Please select the source files – **.M4V/H.264** files archived from DVR, remote I.E., HEM, and select the target directory to save the converted files, and then click on **OK** to do the conversion. The converted **.AVI** files can be played by **Windows Media Player** if **DivX** or the other MPEG-4 decoder (for .M4V) or H.264 decoder (for .H264) is installed in the PC.

## Appendix B--The mouse operation interface reference

When you make use of the mouse operation the DVR please move the cursor to screen below, you will see the icons of mouse function displayed, pressing the diagram mark to hint an operation of choosing your demand then. Control mode in the PTZ under, please pick out to install channel of camera, put the mouse to you to hope turn to move of the direction press left key of mouse and can immediately turn to move. The diagram object function and the front panel key or the remote control key function are basic and similar, the function shows as follows:



	Menu		Search		Escape		Sequence
	Fold tools		Fast backward		Fast forward		Step forward
	Unfold tools		Play/Pause		Stop		Copy
	Alarm reset		Live/Playback		PTZ		Full screen
	Volume		Page up		Page down		Close

## Motion detection setup

Move the cursor to Menu -> Setup -> Camera -> Motion setting -> Detection setting  
Move the cursor to screen below, the icons of motion detection will be displayed.



	Set/Reset highlighted area		Set/Reset whole area		Sensitivity		Test
--	----------------------------	--	----------------------	--	-------------	--	------

## PTZ setup

The function is as follows in the PTZ controls the appearance



	Go to		Figure down		Zoom		Figure up
	Preset position		Focus		Auto Focus		Iris
	SEQ		Auto pan		Speed		Mark

## Video adjustment icons

	This camera default		All camera default		Default
--	---------------------	--	--------------------	--	---------

## Common icons

	Up		Down		Enter		Code
	Left		Right		Delete		Back space
	Confirmed		Space		Mark		Reduce/Add

## Numerical key



## Appendix C – Specifications

System	O.S.	Embedded Linux 2.6
	Multiplex	Sixfold operation - simultaneous record, live, playback, backup, control, & remote access
	Certification	FCC, CE, LVDS, etc.
Video	Format	NTSC/EIA or PAL/CCIR
	Input	4-CH, BNC, 1Vp-p/75ohm
	monitor	15" LCD
	Output	BNC x 1, 1Vp-p/75ohm
	Loss detection	Yes
	Motion detection	Yes, with configurable detection area & sensitivity
Audio	Input	1 RCA-jack connectors, line-in level (100mV-2Vrms)
	Output	1 RCA-jack connectors, line-out level (up to 2Vrms)
Record	Compression	Video: H.264 Audio: ADPCM
	Frame rate (IPS) & Resolution	NTSC – 30 / 720*480, 60 / 720*240, 120 / 360*240 PAL – 25 / 720*576, 50 / 720*288, 100 / 360*288
	Mode	Manual/Schedule/Alarm/Motion
	Pre-record time	0 - 10 seconds
	Post-record time	0 - 60 minutes
Display	Resolution	NTSC – 720*480, PAL – 720*576
	Split windows	1/4
	Frame rate	Up to 30 (NTSC) / 25 (PAL) IPS per display window
	Freeze	Yes
	Sequential switch	User adjustment
Playback	Digital Zoom	X2, X4
	Frame rate (IPS) & Resolution	NTSC – 30 / 720*480, 60 / 720*240, 120 / 360*240 PAL – 25 / 720*576, 50 / 720*288, 100 / 360*288
	Search	Date/time, Camera, Alarm, Motion, & Video Loss
	Operation	Play, Fast Forward, Backward, Pause, Stop, etc. Remote I.E. and HEM can also Print
Storage	HDD	Half-size DVR - 1 set of 3.5 " HDD, Max. 500GB of HDD storage size
	Partitions	Configurable alarm partition size Configurable auto-overwrite or not
	Backup	1 USB 2.0 ports for USB 2.0 disk drives
Alarm	Input	4 contact or TTL/CMOS signal, polarity selectable
	Output	1 Normally Open, 1 Normally Closed relay output
	Buzzer	Yes
	Triggered by	Sensor input, Video loss, & Motion
	Event log	Yes
Network	Ethernet	1 RJ-45 10/100BaseT Ethernet connector
	Web	Remote setup, monitoring, backup, alarm notification, & remote software upgrade
	E-mail	Alarm notification to stationary or mobile devices
	Video	1/4 split-window & SEQ mode
	Audio	Bidirectional
	Protocol	TCP/IP, HTTP, PPPoE, DHCP, DDNS, TSP
	Remote users	Up to 5 users simultaneously
	Bandwidth	TCP/IP type dynamic sliding window control
	Remote stations	PC
	Control	I/R
RS-232		1 D-type female connector for PTZ 1 optional D-type female connector for PTZ
RS-485		2-pin for PTZ control
Setup	Local	On screen setup via keypad, I/R remote control
	Remote	Setup & upload via Windows application software

	Multi-lingual	Yes
Reliability	System recovery	Auto power on after power loss recovery
	Timer	Built-in real time clock
	Security	Multi-level password (3 levels, up to 18 accounts)
Power	Source	DC12V-5A
	Consumption	18W Max.
Operating Temperature		0°C ~ +50°C

## Appendix D – Time Zone Table

Time Zone	Offset	DST	Start	End
Samoa	GMT – 11:00			
Hawaii	GMT – 10:00			
Alaska	GMT – 09:00	~	Mar, 2nd Sun, 2:00	Nov, 1st Sun, 2:00
Pacific Time (US & Canada)	GMT – 08:00	~	Mar, 2nd Sun, 2:00	Nov, 1st Sun, 2:00
Arizona, US Mountain	GMT – 07:00			
Chihuahua, La Paz, Mazatlan	GMT – 07:00	~	May, 1st Sun, 2:00	Sep, last Sun, 2:00
Mountain Time (US & Canada)	GMT – 07:00	~	Mar, 2nd Sun, 2:00	Nov, 1st Sun, 2:00
Central America, Saskatchewan	GMT – 06:00			
Central Time (US & Canada)	GMT – 06:00	~	Mar, 2nd Sun, 2:00	Nov, 1st Sun, 2:00
Guadalajara, Mexico City, Monterrey	GMT – 06:00	~	May, 1st Sun, 2:00	Sep, last Sun, 2:00
Bogota, Lima, Quito, Indiana (East)	GMT – 05:00			
Eastern Time (US & Canada)	GMT – 05:00	~	Mar, 2nd Sun, 2:00	Nov, 1st Sun, 2:00
Atlantic Time (Canada)	GMT – 04:00	~	Mar, 2nd Sun, 2:00	Nov, 1st Sun, 2:00
Caracas, La Paz	GMT – 04:00			
Santiago	GMT – 04:00	~	Oct, 2nd Sun, 0:00	Mar, 2nd Sun, 0:00
Newfoundland	GMT – 03:30	~	Apr, 1st Sun, 2:00	Oct, last Sun, 2:00
Brasilia	GMT – 03:00	~	Oct, 3rd Sun, 2:00	Feb, 3rd Sun, 2:00
Buenos Aires, Georgetown	GMT – 03:00	~	Oct, 3rd Sun, 2:00	Feb, 2nd Sun, 2:00
Greenland	GMT – 03:00	~	Mar, last Sun, 1:00	Oct, last Sun, 1:00
Mid-Atlantic	GMT – 02:00	~	Mar, last Sun, 2:00	Sep, last Sun, 2:00
Azores	GMT – 01:00	~	Mar, last Sun, 2:00	Oct, last Sun, 3:00
Cape Verde	GMT – 01:00			
Casablanca, Monrovia	GMT + 00:00			
Dublin, London	GMT + 00:00	~	Mar, last Sun, 1:00	Oct, last Sun, 2:00
Western Europe, Central Europe	GMT + 01:00	~	Mar, last Sun, 2:00	Oct, last Sun, 3:00
West Central Africa	GMT + 01:00			
Eastern Europe	GMT + 02:00	~	Mar, last Sun, 0:00	Oct, last Sun, 1:00
Cairo	GMT + 02:00	~	Apr, last Fri, 2:00	Sep, last Fri, 2:00
Harare, Pretoria	GMT + 02:00			
Helsinki, Kyiv, Riga, Sofia, Tallinn	GMT + 02:00	~	Mar, last Sun, 2:00	Oct, last Sun, 3:00
Jerusalem	GMT + 02:00	~	Apr 1, 2:00	Oct, 2nd Sun, 2:00
Baghdad	GMT + 03:00	~	Apr 1, 3:00	Oct 1, 4:00
Kuwait, Riyadh, Nairobi	GMT + 03:00			
Moscow, St. Petersburg, Volgograd	GMT + 03:00	~	Mar, last Sun, 2:00	Oct, last Sun, 3:00
Tehran	GMT + 03:30	~	Mar, 4th Tue, 2:00	Sep, 4th Thu, 2:00
Abu Dhabi, Muscat	GMT + 04:00			
Baku, Tbilisi, Yerevan	GMT + 04:00	~	Mar, last Sun, 2:00	Oct, last Sun, 3:00
<b>Time Zone</b>	<b>Offset</b>	<b>DST</b>	<b>Start</b>	<b>End</b>

Kabul	GMT + 04:30			
Ekaterinburg	GMT + 05:00	~	Mar, last Sun, 2:00	Oct, last Sun, 3:00
Islamabad, Karachi, Tashkent	GMT + 05:00			
Chennai, Mumbai, New Delhi	GMT + 05:30			
Kathmandu	GMT + 05:45			
Almaty, Novosibirsk	GMT + 06:00	~	Mar, last Sun, 2:00	Oct, last Sun, 3:00
Astana, Dhaka, Sri Lanka	GMT + 06:00			
Rangoon	GMT + 06:30			
Bangkok, Hanoi, Jakarta	GMT + 07:00			
Krasnoyarsk	GMT + 07:00	~	Mar, last Sun, 2:00	Oct, last Sun, 3:00
Irkutsk, Ulaan Bataar	GMT + 08:00	~	Mar, last Sun, 2:00	Oct, last Sun, 3:00
Beijing, Chingqing, H. K., Urumqi	GMT + 08:00			
Kuala Lumpur, Perth, Singapore	GMT + 08:00			
Taipei	GMT + 08:00			
Osaka, Seoul, Tokyo	GMT + 09:00			
Yakutsk	GMT + 09:00	~	Mar, last Sun, 2:00	Oct, last Sun, 3:00
Adelaide	GMT + 09:30	~	Oct, last Sun, 2:00	Mar, last Sun, 3:00
Darwin	GMT + 09:30			
Brisbane, Guam, Port Moresby	GMT + 10:00			
Canberra, Melbourne, Sydney	GMT + 10:00	~	Oct, last Sun, 2:00	Mar, last Sun, 3:00
Hobart	GMT + 10:00	~	Oct, 1st Sun, 2:00	Mar, last Sun, 3:00
Vladivostok	GMT + 10:00	~	Mar, last Sun, 2:00	Oct, last Sun, 3:00
Magadan, Solomon Is.	GMT + 11:00			
Auckland, Wellington	GMT + 12:00	~	Oct, 1st Sun, 2:00	Mar, 3rd Sun, 2:00
Fiji	GMT + 12:00			
Kamchatka	GMT + 12:00	~	Mar, last Sun, 2:00	Oct, last Sun, 3:00
Anadyr	GMT + 13:00	~	Mar, last Sun, 2:00	Oct, last Sun, 3:00
Nuku'alofa	GMT + 13:00			

## Appendix E – Recording Table

NTSC Recording Time (in Hour) - For Reference Only											
System Storage (GB): 200											
Resolution	Quality	Average		Recording Rate (IPS)							
		Picture Size (KB)*				120	60	30	15	10	5
<b>720x480</b>	9	32.2						58	115	173	345
<b>(Full D1)</b>	8	27.7						67	134	201	401
	7	21.0						88	176	265	529
	6	18.4						101	201	302	604
	5	14.0						132	265	397	794
	4	11.3						164	328	492	983
	3	7.7						241	481	722	1443
	2	5.6						331	661	992	1984
	1	3.6						514	1029	1543	3086
<b>720x240</b>	9	16.1						58	115	230	690
<b>(Half D1)</b>	8	13.9						67	133	266	799
	7	10.5						88	176	353	1058
	6	9.2						101	201	403	1208

	5	7.0				132	265	529	794	1587	
	4	5.7				162	325	650	975	1949	
	3	3.9				237	475	950	1425	2849	
	2	2.8				331	661	1323	1984	3968	
	1	1.8				514	1029	2058	3086	6173	
<b>360x240</b>	9	8.0				58	115	230	463	694	1389
<b>(CIF)</b>	8	7.0				67	133	266	529	794	1587
	7	5.2				88	176	353	712	1068	2137
	6	4.6				101	201	403	805	1208	2415
	5	3.5				132	265	529	1058	1587	3175
	4	2.9				162	325	650	1277	1916	3831
	3	2.0				237	475	950	1852	2778	5556
	2	1.4				331	661	1323	2646	3968	7937
	1	0.9				514	1029	2058	4115	6173	12346

\* Average Picture Size is estimated based on typical camera scene, and averaged by H.264 I/P/P frames.

PAL Recording Time (in Hour) - For Reference Only

System Storage (GB): 200

Resolution	Quality	Average		Recording Rate (IPS)								
		Picture Size (KB)*				100	50	25	12.5	8	4	
<b>720x576</b>	9	42.0						53	106	165	331	
<b>(Full D1)</b>	8	36.0						62	123	193	386	
	7	27.3						81	163	254	509	
	6	21.3						104	209	326	652	
	5	18.3						121	243	379	759	
	4	14.7						151	302	472	945	
	3	10.0						222	444	694	1389	
	2	7.3						304	609	951	1903	
	1	4.7						473	946	1478	2955	
<b>720x288</b>	9	21.0						53	106	212	661	
<b>(Half D1)</b>	8	18.0						62	123	247	772	
	7	13.6						82	163	327	1021	
	6	10.7						104	208	415	1298	
	5	9.2						121	242	483	1510	
	4	7.4						150	300	601	1877	
	3	5.0						222	444	889	2778	
	2	3.7						300	601	1201	3754	
	1	2.4						463	926	1852	5787	
<b>360x288</b>	9	10.5						53	106	212	661	1323
<b>(CIF)</b>	8	8.5						62	123	247	772	1543
	7	7.2						82	163	327	654	1021
	6	5.7						103	206	412	823	1286

	5	5.0			121	242	483	966	1510	3019
	4	4.0			150	300	601	1201	1877	3754
	3	2.8			222	444	889	1778	2778	5556
	2	2.2			292	585	1170	2339	3655	7310
	1	1.4			463	926	1852	3704	5787	11574
* Average Picture Size is estimated based on typical camera scene, and averaged by H.264 I/P/P frames.										

**NOTE :** Above say a reference only , if there is dissimilarity, please take actual machine as quasi-